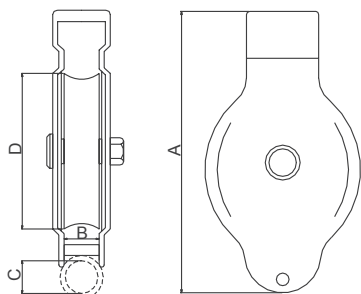


The background of the entire page is a close-up photograph of wood chips, likely from a wood chipper, scattered across a surface. The chips are light brown and vary in size and shape. On the left side, there are several metal components, including a silver-colored pipe, a metal bracket, and a large, dark, cylindrical metal part, possibly a pulley or a wheel, which are partially visible. The text is centered in a white rectangular box.

POULIE · **BLOCKS** · PASTECAS /
REAS · **SHEAVES** · RUEDAS /
GOUPILES · **PINS** · PASADORES

BMM POULIE · BMM BLOCKS · BMM PASTECAS
GALVANIZÉ · GALVANIZED · GALVANIZADOS

TETES · HEADS · CABEZAS



REF	SWL Ton	MAX LOAD ON HEAD FITTING Ton	TEST LOAD Ton	A mm	B mm	C mm	D mm	MAX WIRE mm	POIDS WEIGHT PESO Kg
4PAKT1 - □ □	1	2	4	163	22	16	80	16	1,7
4PAKT2 - □ □	2	4	8	195	24	22	110	18	3,1
4PAKT3 - □ □	3	6	8	257	28	31	150	20	6,4
4PAKT4 - □ □	4	8	16	330	35	40	185	22	11,1
4PAKT5 - □ □	6	12	24	365	42	40	210	24	17

Les poulies doivent être commandées:

BMM- blocks must be ordered with:

Pastecas BMM se deben pedir con:

Indiquer dans la commande P.E KT2-IEGC.

On order add letter, e.g. KT 2-IEGC.

Indicar en su pedido p.e. KT 2-IEGC.

Ou Either o	1	Roulements: KT1et KT2 avec roulements fermé; KT3, KT4, KT6 avec roulements graissables. Ball bearing; KT1, KT2 sealed ball bearings; KT3, KT4, KT6 greaseable ball bearings. Rodamientos; KT1, KT2 c/rodamientos cerrados; KT3, KT4, KT6 c/rodamientos para engrasar.
Ou Either o	0	Bague a bronze a graisser. Bronze bushing; All bronze bushings are greaseable. Cojinete de bronce; se pueden engrasar.
Ou Either o	E	Oeil Ovale giratoire. Swivel eye. Gancho giratorio.
Ou Either o	K	Croc giratoire. Reduction 50% dan le SWL. Swivel hook. If the block is used with hook as suspension, the SWL is reduced with 50%. Gancho giratorio. Si la pasteca se monta con gancho giratorio, la SWL se reduce en un 50%.
Ou Either o	S	Oeil rond giratoire. Swivel shackle eye, KT4, KT6. Ojo p/grillete giratorio KT4, KT6.
Ou Either o	F	Fourche Giratoire, KT4, KT6. Swivel fork, KT4, KT6. Horquilla giratorio, KT4, KT6.

Avec un supplément.

Against extra charge are all blocks available.

Todas las pastecas estan disponibles contra suplemento de precio.

‘B’ Anneau en dessous.
Becket.
Anilla en el fondo.‘C’ Testé et certifié.
Tested with certificate.
Probadas y certificadas.‘H’ Rea Trempé au feu.
Flame hardened sheave.
Rueda templada a fuego.

NABERAN SAREAK S.L.

Mutrikuko Industrialdea 15
20830 Mutriku - Gipuzkoa
+34 943 195 122 | naberan@naberan.com

NABERAN FRANCE SARL

Avenue de la République
ZA Poriguenor | 29730 Le Guilvinec (France)
+33 298 582 739 | david@naberan.com

COMPOSANTS · COMPONENTS · COMPONENTES

TETE · TOP HEAD · CABEZA

OIL OVALE GIRATOIRE SWIVEL EYE CANCAMO GIRATORIO				CROC GIRATOIRE SWIVEL HOOK GANCHO GIRATORIO				OIL ROND GIRATOIRE SWIVEL SHACKLE EYE OJO P_GRILLETE GIRATORIO				FOURCHE GIRATOIRE SWIVEL FORK HORQUILLA GIRATORIA							
REF	M mm	N mm	O mm	P mm	O mm	P mm	Q mm	L mm	M mm	R mm	P mm	K mm	L mm	M mm	N mm	R mm	P mm		
KT 1	25	34	13	65	20	82	25												
KT 2	23	57	16	94	25	94	28												
KT 3	26	66	20	110	30	105	30												
KT 4	33	82	24	134	38	132	38	26	35	35	93	104	23	40	65	30	134		
KT 6	40	95	28	153	46	170	46	29	42	40	100	104	23	40	65	30	134		

REAS · SHEAVES · RUEDAS

ROULEMENT A BILLES BALL BEARING RODAMIENTO DE BOLAS						BAGUE DE BRONZE BRONZE BUSHING COJINETE DE BRONCE				
REF	B mm	D mm	R mm	S mm	POIDS WEIGHT PESO Kg	REF	B mm	D mm	S mm	POIDS WEIGHT PESO Kg
4PASKT1-1	22	80	47	17	0,6	4PASKT1-0	22	80	20	0,75
4PASKT2-1	24	110	52	20	1,25	4PASKT2-0	24	110	25	1,3
4PASKT3-1	28	150	47	20	2,65	4PASKT3-0	28	150	25	2,6
4PASKT4-1	35	185	62	30	5,1	4PASKT4-0	35	185	30	5,2
4PASKT6-1	42	210	76	30	7,7	4PASKT6-0	42	210	30	7,6

GOUPILLES · PINS · PASADORES

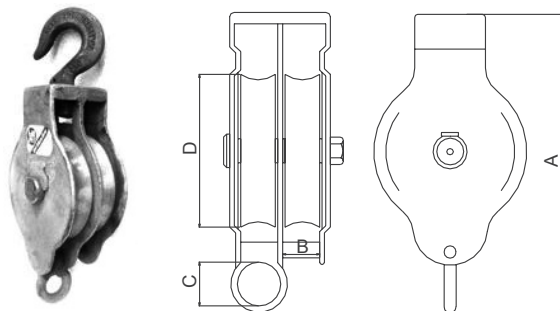
ROULEMENT A BILLES BALL BEARING RODAMIENTO DE BOLAS					BAGUE DE BRONZE BRONZE BUSHING COJINETE DE BRONCE				
REF	X mm	Y mm	Z mm	POIDS WEIGHT PESO Kg	REF	X mm	Y mm	Z mm	POIDS WEIGHT PESO Kg
4PAKPT1-1	50	17	28	0,1	4PAKPT1-0	57	20	28	0,1
4PAKPT2-1	52	20	30	0,15	4PAKPT2-0	61	25	30	0,15
4PAKPT3-1	67	20	41	0,2	4PAKPT3-0	67	25	35	0,2
4PAKPT4-1	75	30	43	0,4	4PAKPT4-0	75	30	43	0,4
4PAKPT6-1	85	30	51	0,45	4PAKPT6-0	85	30	51	0,45

NABERAN SAREAK S.L.

Mutrikuko Industrialdea 15
20830 Mutriku - Gipuzkoa
+34 943 195 122 | naberan@naberan.com

NABERAN FRANCE SARL

Avenue de la République
ZA Poriguenor | 29730 Le Guilvinec (France)
+33 298 582 739 | david@naberan.com

BMM POULIE · BMM BLOCKS · BMM PASTECAS
GALVANIZÉ · GALVANIZED · GALVANIZADOS

TETES · HEADS · CABEZAS



REF	SWL 5:1 Ton	A mm	B mm	C mm	D mm	MAX WIRE mm	POIDS WEIGHT PESO Kg
4PAKT1D - □ □	1	187	22	16	80	16	3,1
4PAKT2D - □ □	2	224	24	22	110	18	5,2
4PAKT3D - □ □	3	296	28	31	150	20	11
4PAKT4D - □ □	4,4	385	35	40	185	22	19
4PAKT6D - □ □	6	425	42	40	210	24	27,8

Les poulies doivent être commandées:

BMM- blocks must be ordered with:

Pastecas BMM se deben pedir con:

Indiquer dans la commande P.E KT2D-IEGC.

On order add letter, e.g. KT 2D-IEGC.

Indicar en su pedido p.e. KT 2D-IEGC.

- Ou
Either
o
- 1 Roulements: KT1et KT2 avec roulements fermés; KT3, KT4, KT6 avec roulements graissables.
Ball bearing; KT1, KT2 sealed ball bearings; KT3, KT4, KT6 greaseable ball bearings.
Rodamientos; KT1, KT2 c/rodamientos cerrados; KT3, KT4, KT6 c/rodamientos para engrasar.
- Ou
Either
o
- 0 Bague a bronze a graisser.
Bronze bushing; All bronze bushings are greaseable.
Cojinete de bronce; se pueden engrasar.
- Ou
Either
o
- E Oeil Ovale giratoire.
Swivel eye.
Gancho giratorio.
- Ou
Either
o
- K Croc giratoire. Reduction 50% dan le SWL.
Swivel hook. If the block is used with hook as suspension, the SWL is reduced with 50%.
Gancho giratorio. Si la pasteca se monta con gancho giratorio, la SWL se reduce en un 50%.
- Ou
Either
o
- S Oeil rond giratoire.
Swivel shackle eye, KT4, KT6.
Ojo p/grillete giratorio KT4, KT6.
- Ou
Either
o
- F Fourche Giratoire, KT4, KT6.
Swivel fork, KT4, KT6.
Horquilla giratorio, KT4, KT6.

Avec un prix supplémentaire.

Against extra charge are all blocks available.

Todas las pastecas estan disponibles contra suplemento de precio.

‘C’ Testé et certifié.
Tested with certificate.
Probadas y certificadas.

‘H’ Rea Trempé au feu.
Flame hardened sheave.
Rueda templada a fuego.

NABERAN SAREAK S.L.

Mutrikuko Industrialdea 15
20830 Mutriku - Gipuzkoa
+34 943 195 122 | naberan@naberan.com

NABERAN FRANCE SARL

Avenue de la République
ZA Poriguenor | 29730 Le Guilvinec (France)
+33 298 582 739 | david@naberan.com

COMPOSANTS · COMPONENTS · COMPONENTES

TETE · TOP HEAD · CABEZA

OIL OVALE GIRATOIRE SWIVEL EYE CANCAMO GIRATORIO				CROC GIRATOIRE SWIVEL HOOK GANCHO GIRATORIO				OIL ROND GIRATOIRE SWIVEL SHACKLE EYE OJO P. GRILLETE GIRATORIO				FOURCHE GIRATOIRE SWIVEL FORK HORQUILLA GIRATORIA							
REF	M mm	N mm	O mm	P mm	O mm	P mm	Q mm	L mm	M mm	R mm	P mm	K mm	L mm	M mm	N mm	R mm	P mm		
KT 1	25	34	13	65	20	82	25												
KT 2	23	57	16	94	25	94	28												
KT 3	26	66	20	110	30	105	30												
KT 4	33	82	24	134	38	132	38	26	35	35	93	104	23	40	65	30	134		
KT 6	40	95	28	153	46	170	46	29	42	40	100	104	23	40	65	30	134		

REAS · SHEAVES · RUEDAS

ROULEMENT A BILLES BALL BEARING RODAMIENTO DE BOLAS						BAGUE DE BRONZE BRONZE BUSHING COJINETE DE BRONCE				
REF	B mm	D mm	R mm	S mm	POIDS WEIGHT PESO Kg	REF	B mm	D mm	S mm	POIDS WEIGHT PESO Kg
4PASKT1-1	22	80	47	17	0,6	4PASKT1-0	22	80	20	0,75
4PASKT2-1	24	110	52	20	1,25	4PASKT2-0	24	110	25	1,3
4PASKT3-1	28	150	47	20	2,65	4PASKT3-0	28	150	25	2,6
4PASKT4-1	35	185	62	30	5,1	4PASKT4-0	35	185	30	5,2
4PASKT6-1	42	210	76	30	7,7	4PASKT6-0	42	210	30	7,6

GOUPILLES · PINS · PASADORES

ROULEMENT A BILLES BALL BEARING RODAMIENTO DE BOLAS					BAGUE DE BRONZE BRONZE BUSHING COJINETE DE BRONCE				
REF	X mm	Y mm	Z mm	POIDS WEIGHT PESO Kg	REF	X mm	Y mm	Z mm	POIDS WEIGHT PESO Kg
4PAPKT1D-1	85	17	55	0,15	4PAPKT1D-0	85	20	56	0,2
4PAPKT2D-1	92	20	60	0,25	4PAPKT2D-0	92	25	61	0,36
4PAPKT3D-1	100	20	76	0,3	4PAPKT3D-0	102	25	70	0,38
4PAPKT4D-1	115	30	86	0,65	4PAPKT4D-0	118	30	86	0,66
4PAPKT6D-1	132	30	100	0,75	4PAPKT6D-0	133	30	100	0,76

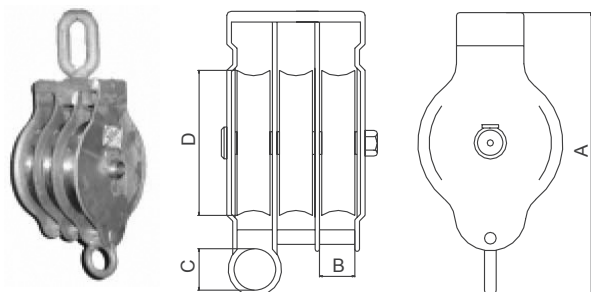
NABERAN SAREAK S.L.

Mutrikuko Industrialdea 15
20830 Mutriku - Gipuzkoa
+34 943 195 122 | naberan@naberan.com

NABERAN FRANCE SARL

Avenue de la République
ZA Poriguenor | 29730 Le Guilvinec (France)
+33 298 582 739 | david@naberan.com

BMM POULIE · BMM BLOCKS · BMM PASTECAS
GALVANIZÉ · GALVANIZED · GALVANIZADOS



TETES · HEADS · CABEZAS



REF	SWL 5:1 Ton	A mm	B mm	C mm	D mm	MAX WIRE mm	POID WEIGHT PESO Kg
4PAKT1T - □ □	1	187	22	16	80	16	4,5
4PAKT2T - □ □	2	224	24	22	110	18	7,5
4PAKT3T - □ □	3	296	28	31	150	20	15,8
4PAKT4T - □ □	4	385	35	40	185	22	27,4
4PAKT6T - □ □	6	425	42	40	210	24	40

Les poulies doivent être commandées:

BMM- blocks must be ordered with:

Pastecas BMM se deben pedir con:

Indiquer dans la commande P.E KT2T-IEGC.

On order add letter, e.g. KT 2T-IEGC.

Indicar en su pedido p.e. KT 2T-IEGC.

Ou Either o	1	Roulements: KT1et KT2 avec roulements fermé; KT3, KT4, KT6 avec roulements graissables. Ball bearing; KT1, KT2 sealed ball bearings; KT3, KT4, KT6 greaseable ball bearings. Rodamientos; KT1, KT2 c/rodamientos cerrados; KT3, KT4, KT6 c/rodamientos para engrasar.
Ou Either o	0	Bague a bronze a graisser. Bronze bushing; All bronze bushings are greaseable. Cojinete de bronce; se pueden engrasar.
Ou Either o	E	Oeil Ovale giratoire. Swivel eye. Gancho giratorio.
Ou Either o	K	Croc giratoire. Reduction 50% dan le SWL. Swivel hook. If the block is used with hook as suspension, the SWL is reduced with 50%. Gancho giratorio. Si la pasteca se monta con gancho giratorio, la SWL se reduce en un 50%.
Ou Either o	S	Oeil rond giratoire. Swivel shackle eye, KT4, KT6. Ojo p/grillete giratorio KT4, KT6.
Ou Either o	F	Fourche Giratoire, KT4, KT6. Swivel fork, KT4, KT6. Horquilla giratorio, KT4, KT6.

Avec un prix supplémentaire.

Against extra charge are all blocks available.

Todas las pastecas estan disponibles contra suplemento de precio.

‘C’ Testé et certifié.
Tested with certificate.
Probadas y certificadas.

‘H’ Rea Trempé au feu.
Flame hardened sheave.
Rueda templada a fuego.

NABERAN SAREAK S.L.

Mutrikuko Industrialdea 15
20830 Mutriku - Gipuzkoa
+34 943 195 122 | naberan@naberan.com

NABERAN FRANCE SARL

Avenue de la République
ZA Poriguenor | 29730 Le Guilvinec (France)
+33 298 582 739 | david@naberan.com

COMPOSANTS · COMPONENTS · COMPONENTES

TETE · TOP HEAD · CABEZA

OEIL OVALE GIRATOIRE SWIVEL EYE CANCAMO GIRATORIO				CROC GIRATOIRE SWIVEL HOOK GANCHO GIRATORIO				OEIL ROND GIRATOIRE SWIVEL SHACKLE EYE OJO P_GRILLETE GIRATORIO				FOURCHE GIRATOIRE SWIVEL FORK HORQUILLA GIRATORIA					
REF	M mm	N mm	O mm	P mm	O mm	P mm	Q mm	L mm	M mm	R mm	P mm	K mm	L mm	M mm	N mm	R mm	P mm
KT 1	25	34	13	65	20	82	25										
KT 2	23	57	16	94	25	94	28										
KT 3	26	66	20	110	30	105	30										
KT 4	33	82	24	134	38	132	38	26	35	35	93	104	23	40	65	30	134
KT 6	40	95	28	153	46	170	46	29	42	40	100	104	23	40	65	30	134

REAS · SHEAVES · RUEDAS

ROULEMENT A BILLES BALL BEARING RODAMIENTO DE BOLAS						BAGUE DE BRONZE BRONZE BUSHING COJINETE DE BRONCE				
REF	B mm	D mm	R mm	S mm	POID WEIGHT PESO Kg	REF	B mm	D mm	S mm	POID WEIGHT PESO Kg
4PASKT1-1	22	80	47	17	0,6	4PASKT1-0	22	80	20	0,75
4PASKT2-1	24	110	52	20	1,25	4PASKT2-0	24	110	25	1,3
4PASKT3-1	28	150	47	20	2,65	4PASKT3-0	28	150	25	2,6
4PASKT4-1	35	185	62	30	5,1	4PASKT4-0	35	185	30	5,2
4PASKT6-1	42	210	76	30	7,7	4PASKT6-0	42	210	30	7,6

GOUPILLES · PINS · PASADORES

ROULEMENT A BILLES BALL BEARING RODAMIENTO DE BOLAS					BAGUE DE BRONZE BRONZE BUSHING COJINETE DE BRONCE				
REF	X mm	Y mm	Z mm	POID WEIGHT PESO Kg	REF	X mm	Y mm	Z mm	POID WEIGHT PESO Kg
4PAPKTIT-1	106	17	88	0,22	4PAPKTIT-0	106	20	88	0,28
4PAPKT2T-1	115	20	92	0,32	4PAPKT2T-0	115	25	92	0,41
4PAPKT3T-1	125	20	110	0,55	4PAPKT3T-0	125	25	110	0,66
4PAPKT4T-1	174	30	159	0,88	4PAPKT4T-0	174	30	159	0,88
4PAPKT6T-1	192	30	177	1,2	4PAPKT6T-0	192	30	177	1,2

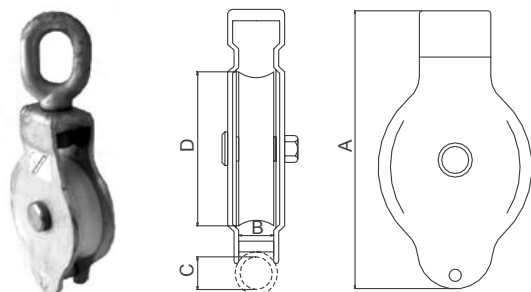
NABERAN SAREAK S.L.

Mutrikuko Industrialdea 15
20830 Mutriku - Gipuzkoa
+34 943 195 122 | naberan@naberan.com

NABERAN FRANCE SARL

Avenue de la République
ZA Poriguenor | 29730 Le Guilvinec (France)
+33 298 582 739 | david@naberan.com

BMM POULIE · BMM BLOCKS · BMM PASTECAS
GALVANIZÉ · GALVANIZED · GALVANIZADOS

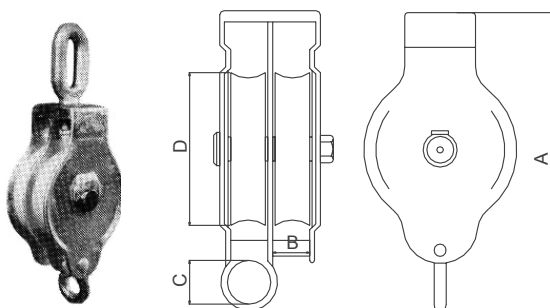


TETES · HEADS · CABEZAS



REA EN NYLON
NYLON SHEAVE
RUEDA EN NYLON

REF	SWL 5:1 Ton	A mm	B mm	C mm	D mm	MAX WIRE mm	POID WEIGHT PESO Kg
4PAKT1N - □	1	163	22	16	80	16	1,3
4PAKT2N - □	2	195	24	22	110	18	2,1
4PAKT3N - □	3	257	28	31	150	20	4,1



TETES · HEADS · CABEZAS



REA EN NYLON
NYLON SHEAVE
RUEDA EN NYLON

REF	SWL 5:1 Ton	A mm	B mm	C mm	D mm	MAX WIRE mm	POID WEIGHT PESO Kg
KT 1N - □	1	163	22	16	80	16	1,3
KT 2N - □	2	195	24	22	110	18	2,1
KT 3N - □	3	257	28	31	150	20	4,1

Les poulies doivent être commandées:

BMM- blocks must be ordered with:

Pastecas BMM se deben pedir con:

Ou
Either
o



Oeil Ovale giratoire.
Swivel eye.
Cancamo giratorio.

Ou
Either
o



Croc giratoire. Reduction 50% dan le SWL.
Swivel hook. If the block is used with hook as suspension, the SWL is reduced with 50%.
Gancho giratorio. Si la pasteca se monta con gancho giratorio, la SWL se reduce en un 50%.

Avec un prix supplémentaire.

Against extra charge are all blocks available.

Todas las pastecas estan disponibles contra suplemento de precio.

‘C’

Testé et certifié.
Tested with certificate.
Probadas y certificadas.

‘B’

Anneau en dessous.
Becket.
Anilla en el fondo.

NABERAN SAREAK S.L.

Mutrikuko Industrialdea 15
20830 Mutriku - Gipuzkoa
+34 943 195 122 | naberan@naberan.com

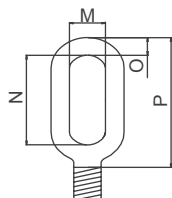
NABERAN FRANCE SARL

Avenue de la République
ZA Poriguenor | 29730 Le Guilvinec (France)
+33 298 582 739 | david@naberan.com

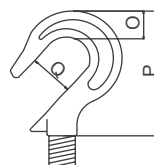
COMPOSANTS · **COMPONENTS** · COMPONENTES

TETE · **TOP HEAD** · CABEZA

OEIL OVALE GIRATOIRE
SWIVEL EYE
CANCAMO GIRATORIO

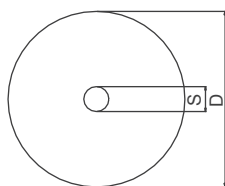


CROC GIRATOIRE
SWIVEL HOOK
GANCHO GIRATORIO



REF	M mm	N mm	O mm	P mm	O mm	P mm	Q mm
KT 1-N	25	34	13	65	20	82	25
KT 2-N	23	57	16	94	25	94	28
KT 3-N	26	66	20	110	30	105	30

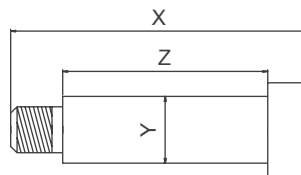
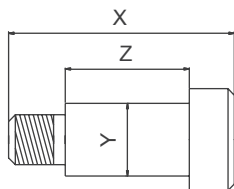
REAS · **SHEAVES** · RUEDAS



REA DE NYLON
NYLON
RUEDA DE NYLON

REF	B mm	D mm	S mm	POID WEIGHT PESO Kg
4PASKT1N	22	80	17	0,15
4PASKT2N	24	110	20	0,25
4PASKT3N	28	150	20	0,55

GOUPILLES · **PINS** · PASADORES



REF	X mm	Y mm	Z mm	POID WEIGHT PESO Kg
4PAPKT1N	50	17	28	0,1
4PAPKT2N	52	20	30	0,15
4PAPKT3N	67	20	41	0,2

REF	X mm	Y mm	Z mm	POID WEIGHT PESO Kg
4PAPKT1DN	77	17	55	0,15
4PAPKT2DN	82	20	60	0,25
4PAPKT3DN	100	20	76	0,3

NABERAN SAREAK S.L.

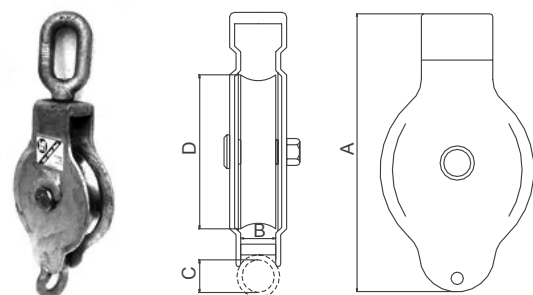
Mutrikuko Industrialdea 15
20830 Mutriku - Gipuzkoa
+34 943 195 122 | naberan@naberan.com

NABERAN FRANCE SARL

Avenue de la République
ZA Poriguenor | 29730 Le Guilvinec (France)
+33 298 582 739 | david@naberan.com

BMM POULIE · BMM BLOCKS · BMM PASTECAS

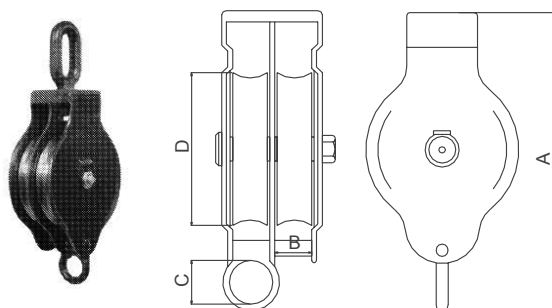
ACIER INOX · STAINLESS STEEL · ACERO INOX



TETES · HEADS · CABEZAS



REF	SWL 5:1 Ton	A mm	B mm	C mm	D mm	MAX WIRE mm	POID WEIGHT PESO Kg
4PAKT1-I-ESS	1	163	22	16	80	16	1,7
4PAKT2-I-ESS	2	195	24	22	110	18	3,2



REF	SWL 5:1 Ton	A mm	B mm	C mm	D mm	MAX WIRE mm	POID WEIGHT PESO Kg
4PAKT1D-I-ESS	1	187	22	16	80	16	2,8
4PAKT2D-I-ESS	2	224	24	22	110	18	5,2

Avec un prix supplémentaire.

Against extra charge are all blocks available.

Todas las pastecas estan disponibles contra suplemento de precio.

‘C’ Testé et certifié.
Tested with certificate.
 Probadas y certificadas.

‘B’ Anneau en dessous.
Becket.
 Anilla en el fondo.

NABERAN SAREAK S.L.

Mutrikuko Industrialdea 15
 20830 Mutriku - Gipuzkoa
 +34 943 195 122 | naberan@naberan.com

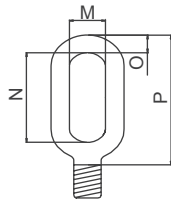
NABERAN FRANCE SARL

Avenue de la République
 ZA Poriguenor | 29730 Le Guilvinec (France)
 +33 298 582 739 | david@naberan.com

COMPOSANTS · **COMPONENTS** · COMPONENTES

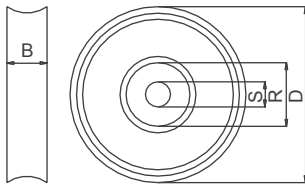
TETE · **TOP HEAD** · CABEZA

OËIL OVALE GIRATOIRE
SWIVEL EYE
CANCAMO GIRATORIO



REF	M mm	N mm	O mm	P mm
KT1D-1ESS	25	34	13	65
KT2-1ESS	23	57	16	94

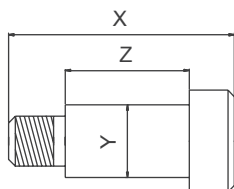
REAS · **SHEAVES** · RUEDAS



ROULEMENT A BILLES
BALL BEARING
RODAMIENTO DE BOLAS

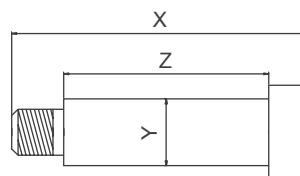
REF	B mm	D mm	R mm	S mm	POID WEIGHT PESO Kg
4PASTK1-1SS	22	80	40	17	0,6
4PASTK2-1SS	24	150	47	20	1,25

GOUPILLES · **PINS** · PASADORES



ROULEMENT A BILLES
BALL BEARING
RODAMIENTO DE BOLAS

REF	X mm	Y mm	Z mm	POID WEIGHT PESO Kg
4PA_PKT1-1SS	50	17	28	0,10
4PA_PKT2-1SS	52	20	30	0,15



ROULEMENT A BILLES
BALL BEARING
RODAMIENTO DE BOLAS

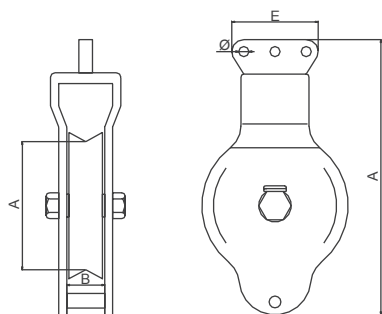
REF	X mm	Y mm	Z mm	POID WEIGHT PESO Kg
4PA_PKT1-1SS	77	17	55	0,15
4PA_PKT2-1SS	82	20	60	0,25

NABERAN SAREAK S.L.

Mutrikuko Industrialdea 15
20830 Mutriku - Gipuzkoa
+34 943 195 122 | naberan@naberan.com

NABERAN FRANCE SARL

Avenue de la République
ZA Poriguenor | 29730 Le Guilvinec (France)
+33 298 582 739 | david@naberan.com

BMM POULIE · BMM BLOCKS · BMM PASTECAS
GALVANIZÉ · GALVANIZED · GALVANIZADOS

REF	SWL Ton	A mm	B mm	C mm	D mm	E mm	Ø mm	MAX WIRE mm	POID WEIGHT PESO Kg
4PAKT2-TG	2	251	24	22	110	135	20	18	3,1
4PAKT3-TG	3	320	28	31	150	160	23	20	6,4
4PAKT4-TG	4,4	402	35	40	185	250	26	22	11,1
4PAKT6-TG	6	445	42	40	210	277	29	24	17

Les poulies doivent être commandées:

BMM- blocks must be ordered with:

Pastecas BMM se deben pedir con:

Indiquer dans la commande P.E KT2-TG.

On order add letter, e.g. KT 2-TG.

Indicar en su pedido p.e. KT 2-TG.

Ou
Either
o

Roulements: KT1et KT2 avec roulements fermé; KT3, KT4, KT6 avec roulements graissables.

Ball bearing; KT1, KT2 sealed ball bearings; KT3, KT4, KT6 greaseable ball bearings.

Rodamientos; KT1, KT2 c/rodamientos cerrados; KT3, KT4, KT6 c/rodamientos para engrasar.

Ou
Either
o

Bague a bronze a graisser.

Bronze bushing; All bronze bushings are greaseable.

Cojinete de bronce; se pueden engrasar.

Avec un prix supplémentaire.

Against extra charge are all blocks available.

Todas las pastecas estan disponibles contra suplemento de precio.

‘B’

Anneau en dessous.
Becket.
Anilla en el fondo.

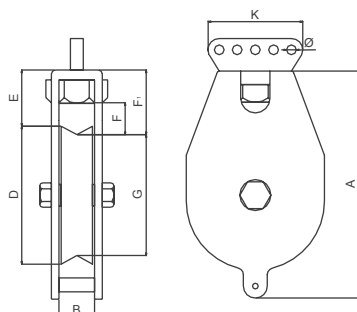
‘C’

Testé et certifié.
Tested with certificate.
Probadas y certificadas.

‘H’

Rea Trempé au feu.
Flame hardened sheave.
Rueda templada a fuego.**NABERAN SAREAK S.L.**Mutrikuko Industrialdea 15
20830 Mutriku - Gipuzkoa
+34 943 195 122 | naberan@naberan.com**NABERAN FRANCE SARL**Avenue de la République
ZA Poriguenor | 29730 Le Guilvinec (France)
+33 298 582 739 | david@naberan.com

BMM POULIE · **BMM BLOCKS** · BMM PASTECAS
GALVANIZÉ · **GALVANIZED** · GALVANIZADOS



REF	SWL Ton	A mm	B mm	D mm	E mm	F mm	F1 mm	G mm	J mm	K mm	Ø mm	MAX WIRE mm	POID WEIGHT PESO Kg
4PAKT230-TG	6	485	57	230	150	110	168	195	8	287	29	28	29
4PAKT300-TG	9	580	66	300	155	100	175	260	10	337	33	28	55

Les poulies doivent être commandées:
BMM- blocks must be ordered with:
Pastecas BMM se deben pedir con:

Indiquer dans la commande P.E KT230-TG.
On order add letter, e.g. KT230-TG.
Indicar en su pedido p.e. KT230-TG.

Avec un prix supplémentaire.
Against extra charge are all blocks available.
Todas las pastecas estan disponibles contra suplemento de precio.

'B' Anneau en dessous.
Becket.
Anilla en el fondo.

'C' Testé et certifié.
Tested with certificate.
Probadas y certificadas.

'H' Rea Trempé au feu.
Flame hardened sheave.
Rueda templada a fuego.

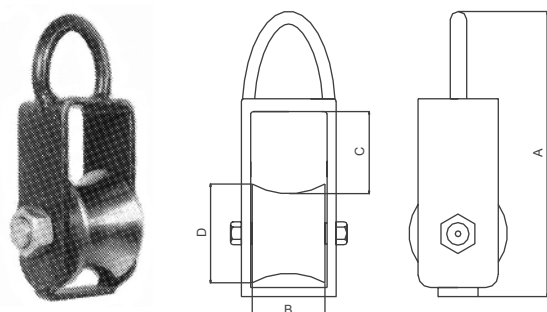
NABERAN SAREAK S.L.

Mutrikuko Industrialdea 15
20830 Mutriku - Gipuzkoa
+34 943 195 122 | naberan@naberan.com

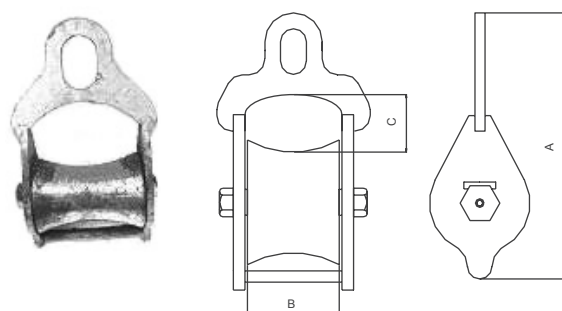
NABERAN FRANCE SARL

Avenue de la République
ZA Poriguenor | 29730 Le Guilvinec (France)
+33 298 582 739 | david@naberan.com

BMM POULIE DE MANEUVRE · **BMM-LAZY LINE BLOCK** · BMM-PASTECA_MANIOBRA_CUERDAS
 GALVANIZÉ · **GALVANIZED** · GALVANIZADOS



REF	SWL 5:1 Ton	A mm	B mm	C mm	D mm	POID WEIGHT PESO Kg
4PAKA050-ORG	1	190	50	55	75	2,5



REF	SWL 5:1 Ton	A mm	B mm	C mm	D mm	POID WEIGHT PESO Kg
4PAKA100-ORG	2	280	100	85	75	4,8
4PAKA150-ORG	3	350	150	100	100	11

NABERAN SAREAK S.L.

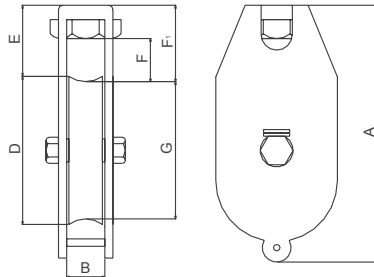
Mutrikuko Industrialdea 15
 20830 Mutriku - Gipuzkoa
 +34 943 195 122 | naberan@naberan.com

NABERAN FRANCE SARL

Avenue de la République
 ZA Poriguenor | 29730 Le Guilvinec (France)
 +33 298 582 739 | david@naberan.com

BMM - POULIE DE MANEUBRE · BMM - TACKLE BLOCKS · BMM - PASTECAS_LEVANTAR

BLEU PEINT · BLUE PAINTED · PINTADA DE AZUL



TETES · HEADS · CABEZAS



REF	SWL 5:1 Ton	A mm	B mm	D mm	E mm	F mm	F1 mm	G mm	J mm	MAX WIRE mm	POID WEIGHT PESO Kg
4PAKT230-1 □	6	405	57	230	150	110	168	195	8	28	29
4PAKT300-1 □	9	480	66	300	155	100	175	260	10	28	55
4PAKT230-2 □	7	405	57	230	150	110	168	195	8	28	29
4PAKT300-2 □	10	480	66	300	155	100	175	260	10	28	55
4PAKT400-2 □	15	645	70	400	215	150	240	345	12	28	108
4PAKT500-2 □	20	780	76	515	250	160	285	445	15	30	154

Les poulies doivent être commandées:

BMM- blocks must be ordered with:

Pastecas BMM se deben pedir con:

Indiquer dans la commande P.E KT230-1EG.

On order add letter, e.g. KT230-1EG.

Indicar en su pedido p.e. KT230-1EG.

- Ou
Either
o
- 1 Roulements à billes.
Ball bearing.
Rodamientos de bolas.
- Ou
Either
o
- 2 Roulements a rouleau.
Roller bearing.
Rodamiento de rodillos.
- Ou
Either
o
- E Oeil Ovale giratoire.
Swivel eye.
Gancho giratorio.
- Ou
Either
o
- F Fourche Giratoire.
Swivel fork.
Gancho giratorio.
- Ou
Either
o
- S Oeil rond giratoire
Swivel shackle eye.
Ojo p/grillete giratorio.

Avec un prix supplémentaire.

Against extra charge are all blocks available.

Todas las pastecas estan disponibles contra suplemento de precio.

‘B’ Anneau en dessous.
Becket.
Anilla en el fondo.

‘C’ Testé et certifié.
Tested with certificate.
Probadas y certificadas.

‘H’ Rea Trempé au feu.
Flame hardened sheave.
Rueda templada a fuego.

‘G’ Galvanize.
Galvanized.
Galvanizadas.

NABERAN SAREAK S.L.

Mutrikuko Industrialdea 15
20830 Mutriku - Gipuzkoa
+34 943 195 122 | naberan@naberan.com

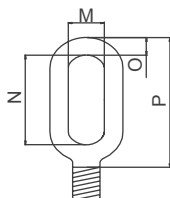
NABERAN FRANCE SARL

Avenue de la République
ZA Poriguenor | 29730 Le Guilvinec (France)
+33 298 582 739 | david@naberan.com

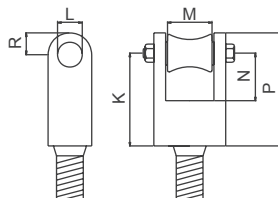
COMPOSANTS · COMPONENTS · COMPONENTES

TETE · TOP HEAD · CABEZA

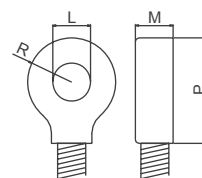
OEIL OVALE GIRATOIRE
SWIVEL EYE
CANCAMO GIRATORIO



FOURCHE GIRATOIRE
SWIVEL FORK
HORQUILLA GIRATORIA

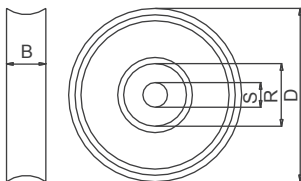


OEIL ROND GIRATOIRE
SWIVEL SHACKLE EYE
OJO P_GRILLETE GIRATORIO



REF	M mm	N mm	O mm	P mm	K mm	L mm	M mm	N mm	R mm	P mm	L mm	M mm	R mm	P mm
KT 230-1	40	95	28	153	104	23	40	65	30	134	39	50	45	115
KT 300-1	54	110	35	181	140	29	52	84	35	175	43	58	50	125
KT 230-2	40	95	28	153	104	23	40	65	30	134	39	50	45	115
KT 300-2	54	110	35	181	140	29	52	84	35	175	43	58	50	125
KT 400-2	58	110	50	225	195	51	85	115	65	260	51	73	60	150
KT 500-2	75	140	55	280	195	51	85	115	65	260	51	73	60	150

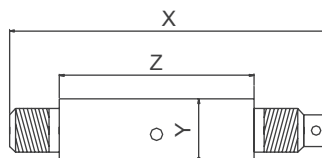
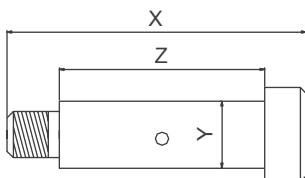
REAS · SHEAVES · RUEDAS



ROULEMENT
BEARING
RODAMIENTOS

REF	B mm	D mm	R mm	S mm	POID WEIGHT PESO kg
4PASKT230-1	57	230	80	35	12,8
4PASKT300-1	66	300	100	45	18,2
4PASKT230-2	57	230	80	35	12,8
4PASKT300-2	66	300	100	45	18,2
4PASKT400-2	70	400	128	60	35
4PASKT500-2	76	515	140	65	42,5

GOUPILLES · PINS · PASADORES



REF	X mm	Y mm	Z mm	POID WEIGHT PESO kg
4PAPTK230-1	118	35	78	1,1
4PAPTK300-1	140	45	79	1,9
4PAPTK230-2	118	35	78	1,1
4PAPTK300-2	140	45	79	1,9

REF	X mm	Y mm	Z mm	POID WEIGHT PESO kg
4PAPKT400-2	217	60	97	8
4PAPKT500-2	242	65	112	9,5

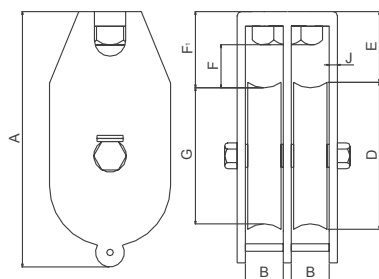
NABERAN SAREAK S.L.

Mutrikuko Industrialdea 15
20830 Mutriku - Gipuzkoa
+34 943 195 122 | naberan@naberan.com

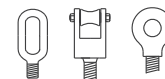
NABERAN FRANCE SARL

Avenue de la République
ZA Poriguenor | 29730 Le Guilvinec (France)
+33 298 582 739 | david@naberan.com

BMM - POULIE DE MANEUBRE · **BMM - TACKLE BLOCKS** · BMM - PASTECAS_LEVANTAR
BLEU PEINT · **BLUE PAINTED** · PINTADA DE AZUL



TETES · **HEADS** · CABEZAS



REF	SWL 5:1 Ton	A mm	B mm	D mm	E mm	F mm	F1 mm	G mm	J mm	MAX WIRE mm	POID WEIGHT PESO Kg
4PAKT230D-1 □	9	405	57	230	150	110	168	195	8	28	54
4PAKT300D-1 □	11	480	66	300	155	100	175	260	10	28	86
4PAKT400D-2 □	15	645	70	400	215	150	240	345	12	28	166
4PAKT500D-2 □	20	780	76	515	250	160	285	445	15	30	251

Les poulies doivent être commandées:
BMM- blocks must be ordered with:
Pastecas BMM se deben pedir con:

Indiquer dans la commande P.E KT230D-IEG.
On order add letter, e.g. KT230D-IEG.
Indicar en su pedido p.e. KT230D-IEG.

- Ou
Either
o
- 1 Roulements à billes.
Ball bearing.
Rodamientos de bolas.
- Ou
Either
o
- 2 Roulements a rouleau.
Roller bearing.
Rodamiento de rodillos.
- Ou
Either
o
- E Oeil Ovale giratoire.
Swivel eye.
Cancamo giratorio.
- Ou
Either
o
- F Fourche Giratoire.
Swivel fork.
Horquilla giratorio.
- Ou
Either
o
- S Oeil rond giratoire
Swivel shackle eye.
Ojo p/grillete giratorio.

Avec un prix supplémentaire.
Against extra charge are all blocks available.
Todas las pastecas estan disponibles contra suplemento de precio.

'B' Anneau en dessous.
Becket.
Anilla en el fondo.

'C' Testé et certifié.
Tested with certificate.
Probadas y certificadas.

'H' Rea Trempé au feu.
Flame hardened sheave.
Rueda templada a fuego.

'G' Galvanize.
Galvanized.
Galvanizadas.

NABERAN SAREAK S.L.

Mutrikuko Industrialdea 15
20830 Mutriku - Gipuzkoa
+34 943 195 122 | naberan@naberan.com

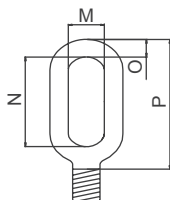
NABERAN FRANCE SARL

Avenue de la République
ZA Poriguenor | 29730 Le Guilvinec (France)
+33 298 582 739 | david@naberan.com

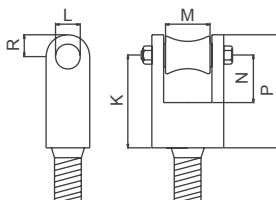
COMPOSANTS · COMPONENTS · COMPONENTES

TETE · TOP HEAD · CABEZA

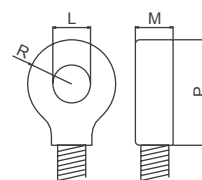
OEIL OVALE GIRATOIRE
SWIVEL EYE
CANCAMO GIRATORIO



FOURCHE GIRATOIRE
SWIVEL FORK
HORQUILLA GIRATORIA

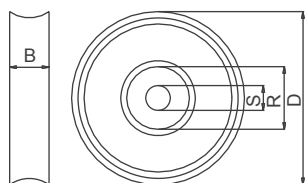


OEIL ROND GIRATOIRE
SWIVEL SHACKLE EYE
OJO P. GRILLETE GIRATORIO

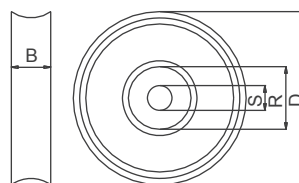


REF	M mm	N mm	O mm	P mm	K mm	L mm	M mm	N mm	R mm	P mm	L mm	M mm	R mm	P mm
KT 230D-1	54	110	35	181	140	29	52	84	35	175	39	50	45	115
KT 300D-1	48	105	38	203	140	29	52	84	35	175	43	58	50	125
KT 400D-2	58	110	50	225	195	51	85	115	65	260	51	73	60	150
KT 500D-2	75	140	55	280	195	51	85	115	65	260	51	73	60	150

REAS · SHEAVES · RUEDAS



ROULEMENT A BILLES
BALL BEARING
RODAMIENTO DE BOLAS

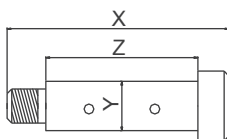


ROULEMENT A ROULEAU
ROLLER BEARING
RODAMIENTO DE RODILLOS

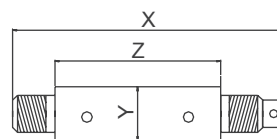
REF	B mm	D mm	R mm	S mm	POID WEIGHT PESO Kg
4PASKT230-1	57	230	80	35	12,8
4PASKT300-1	66	300	100	45	18,2

REF	B mm	D mm	R mm	S mm	POID WEIGHT PESO Kg
4PASKT400-2	70	400	128	60	35
4PASKT500-2	76	515	140	65	42,5

GOUPILLES · PINS · PASADORES



ROULEMENT A BILLES
BALL BEARING
RODAMIENTO DE BOLAS



ROULEMENT A ROULEAU
ROLLER BEARING
RODAMIENTO DE RODILLOS

REF	X mm	Y mm	Z mm	POID WEIGHT PESO Kg
4PAPTK230D-1	118	35	140	1,6
4PAPTK300D-1	205	45	162	2

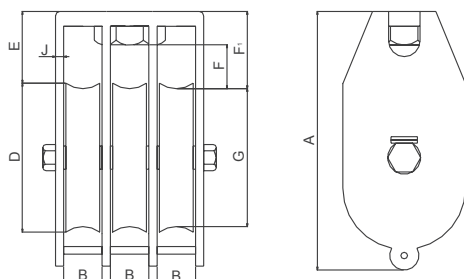
REF	X mm	Y mm	Z mm	POID WEIGHT PESO Kg
4PAPTK400D-2	305	60	183	10
4PAPTK500D-2	340	65	210	12

NABERAN SAREAK S.L.

Mutrikuko Industrialdea 15
20830 Mutriku - Gipuzkoa
+34 943 195 122 | naberan@naberan.com

NABERAN FRANCE SARL

Avenue de la République
ZA Poriguenor | 29730 Le Guilvinec (France)
+33 298 582 739 | david@naberan.com

BMM - POULIE DE MANEUBRE · **BMM - TACKLE BLOCKS** · BMM - PASTECAS_LEVANTARBLEU PEINT · **BLUE PAINTED** · PINTADA DE AZUL

REF	SWL 5:1 Ton	A mm	B mm	D mm	E mm	F mm	F1 mm	G mm	J mm	MAX WIRE mm	POID WEIGHT PESO Kg
4PAKT230T-1	9	405	57	230	150	110	168	195	8	28	75
4PAKT300T-1	11	480	66	300	155	100	175	260	10	28	122

Les poulies doivent être commandées:

BMM- blocks must be ordered with:

Pastecas BMM se deben pedir con:

Indiquer dans la commande P.E KT230T-1EG

On order add letter, e.g. KT230T-1EG.

Indicar en su pedido p.e. KT230T-1EG.

- Ou
Either
o
- E** Oeil Ovale giratoire.
Swivel eye.
Cancamo giratorio.
- Ou
Either
o
- F** Fourche Giratoire.
Swivel fork.
Horquilla giratorio.
- Ou
Either
o
- S** Oeil rond giratoire
Swivel shackle eye.
Ojo p/grillete giratorio.

Avec un prix supplémentaire.

Against extra charge are all blocks available.

Todas las pastecas estan disponibles contra suplemento de precio.

'B' Anneau en dessous.
Becket.
Anilla en el fondo.

'C' Testé et certifié.
Tested with certificate.
Probadas y certificadas.

'H' Rea Trempé au feu.
Flame hardened sheave.
Rueda templada a fuego.

'G' Galvanize.
Galvanized.
Galvanizadas.

'2' Roulements a rouleau.
Roller bearing.
Rodamiento de rodillos.

NABERAN SAREAK S.L.

Mutrikuko Industrialdea 15
20830 Mutriku - Gipuzkoa
+34 943 195 122 | naberan@naberan.com

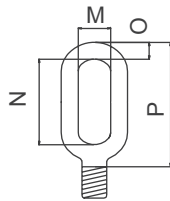
NABERAN FRANCE SARL

Avenue de la République
ZA Poriguenor | 29730 Le Guilvinec (France)
+33 298 582 739 | david@naberan.com

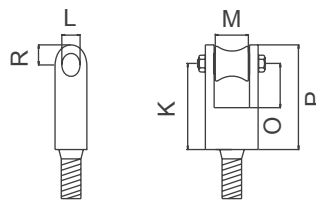
COMPOSANTS · **COMPONENTS** · COMPONENTES

TETE · **TOP HEAD** · CABEZA

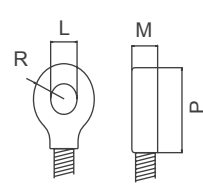
OEIL OVALE GIRATOIRE
SWIVEL EYE
CANCAMO GIRATORIO



FOURCHE GIRATOIRE
SWIVEL FORK
HORQUILLA GIRATORIA

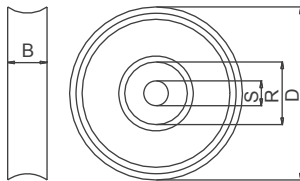


OEIL ROND GIRATOIRE
SWIVEL SHACKLE EYE
OJO P_GRILLETE GIRATORIO



REF	M mm	N mm	O mm	P mm	K mm	L mm	M mm	N mm	R mm	P mm	L mm	M mm	R mm	P mm
KT 230T-1	54	110	35	181	140	29	52	84	35	175	39	50	45	115
KT 300T-1	48	105	38	203	140	29	52	84	35	175	43	58	50	125

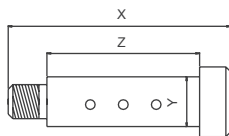
REAS · **SHEAVES** · RUEDAS



ROULEMENT A BILLES
BALL BEARING
RODAMIENTO DE BOLAS

REF	B mm	D mm	R mm	S mm	POID WEIGHT PESO Kg
4PASKT230-1	57	230	80	35	12,8
4PASKT300-1	66	300	100	45	18,2

GOUPILLES · **PINS** · PASADORES



REF	X mm	Y mm	Z mm	POID WEIGHT PESO Kg
4PAPTK230T-1	256	35	208	2,3
4PAPTK300T-2	285	45	242	2,9

NABERAN SAREAK S.L.

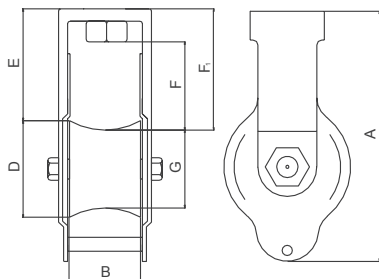
Mutrikuko Industrialdea 15
20830 Mutriku - Gipuzkoa
+34 943 195 122 | naberan@naberan.com

NABERAN FRANCE SARL

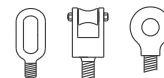
Avenue de la République
ZA Poriguenor | 29730 Le Guilvinec (France)
+33 298 582 739 | david@naberan.com

BMM - POULIE DE MANEUBRE · BMM - TACKLE BLOCKS · BMM - PASTECAS_LEVANTAR

BLEU PEINT · BLUE PAINTED · PINTADA DE AZUL



TETES · HEADS · CABEZAS



REF	SWL 5:1 Ton	A mm	B mm	D mm	E mm	F mm	F1 mm	G mm	POID WEIGHT PESO Kg
4PAKT110 - □ □	3	270	85	110	128	85	145	72	9
4PAKT150 - □ □	5	320	85	150	130	85	150	112	17
4PAKT215 - □ □	8	415	100	215	145	100	170	170	36
4PAKT150/180 - □ □	5	325	180	150	140	90	150	110	32

Les poulies doivent être commandées:

BMM- blocks must be ordered with:

Pastecas BMM se deben pedir con:

Indiquer dans la commande P.E KT2-IEGC.

On order add letter, e.g. KT 2-IEGC.

Indicar en su pedido p.e. KT 2-IEGC.

Ou Either o	1	Roulements à billes. Ball bearing. Rodamientos de bolas.
Ou Either o	0	Bague a bronze a graisser. Bronze bushing; All bronze bushings are greaseable. Cojinete de bronce; se pueden engrasar.
Ou Either o	E	Oeil Ovale giratoire. Swivel eye. Cancamo giratorio.
Ou Either o	F	Fourche Giratoire. Swivel fork. Horquilla giratorio.
Ou Either o	S	Oeil rond giratoire Swivel shackle eye. Ojo p/grillete giratorio.

Avec un prix supplémentaire.

Against extra charge are all blocks available.

Todas las pastecas estan disponibles contra suplemento de precio.

'C' Testé et certifié.
Tested with certificate.
Probadas y certificadas.

'H' Rea Trempé au feu.
Flame hardened sheave.
Rueda templada a fuego.

NABERAN SAREAK S.L.

Mutrikuko Industrialdea 15
20830 Mutriku - Gipuzkoa
+34 943 195 122 | naberan@naberan.com

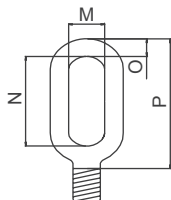
NABERAN FRANCE SARL

Avenue de la République
ZA Poriguenor | 29730 Le Guilvinec (France)
+33 298 582 739 | david@naberan.com

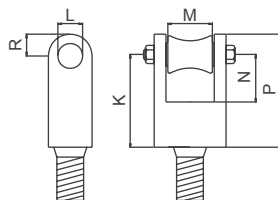
COMPOSANTS · COMPONENTS · COMPONENTES

TETE · TOP HEAD · CABEZA

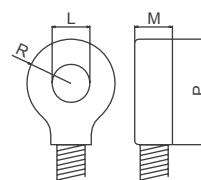
OEIL OVALE GIRATOIRE
SWIVEL EYE
CANCAMO GIRATORIO



FOURCHE GIRATOIRE
SWIVEL FORK
HORQUILLA GIRATORIA

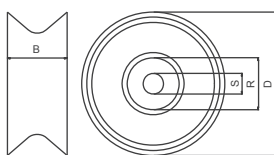


OEIL ROND GIRATOIRE
SWIVEL SHACKLE EYE
OJO P_GRILETTE GIRATORIO

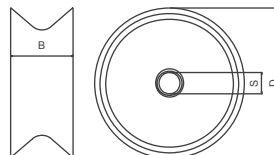


REF	M mm	N mm	O mm	P mm	K mm	L mm	M mm	N mm	R mm	P mm	L mm	M mm	R mm	P mm
KT 110	33	82	24	134	104	23	40	65	30	134	23	30	35	93
KT 150	40	95	28	153	140	29	40	65	30	134	29	42	40	100
KT 215	54	110	35	181	104	23	52	84	35	175	36	50	45	115
KT 150/180	40	95	28	153										

REAS · SHEAVES · RUEDAS



ROULEMENT A BILLES
BALL BEARING
RODAMIENTO DE BOLAS

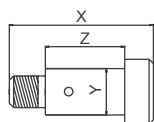


BAGUE DE BRONZE
BRONZE BUSHING
COJINETE DE BRONCE

REF	B mm	D mm	R mm	S mm	POID WEIGHT PESO Kg
4PASKT110-1	85	110	62	25	3,6
4PASKT150-1	85	150	62	25	8,1
4PASKT215-1	100	215	80	35	18,3
4PASKT150/180-1	180	150	62	30	17,5

REF	B mm	D mm	S mm	POID WEIGHT PESO Kg
4PASKT110-0	85	110	25	3,8
4PASKT150-0	85	150	25	8,2
4PASKT215-0	100	215	35	18,5

GOUPILLES · PINS · PASADORES



ROULEMENT A BILLES
BALL BEARING
RODAMIENTO DE BOLAS



BAGUE DE BRONZE
BRONZE BUSHING
COJINETE DE BRONCE

REF	X mm	Y mm	Z mm	POID WEIGHT PESO Kg
4PAPTK110-1	144	25	115	0,6
4PAPTK150-1	154	25	122	0,7
4PAPTK215-1	158	35	117	1,3
4PAPTK150/180-1	250	30	217	1,55

REF	X mm	Y mm	Z mm	POID WEIGHT PESO Kg
4PAPKT110-0	144	25	115	0,6
4PAPKT150-0	154	25	122	0,7
4PAPKT215-0	158	35	117	1,3

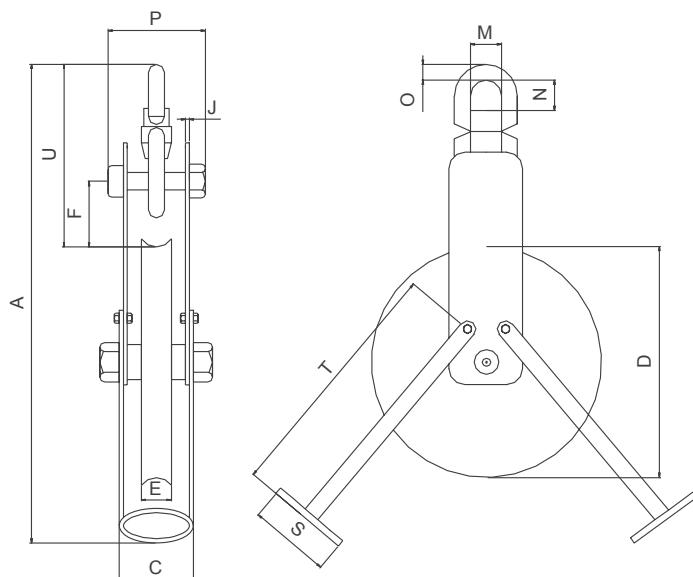
NABERAN SAREAK S.L.

Mutrikuko Industrialdea 15
20830 Mutriku - Gipuzkoa
+34 943 195 122 | naberan@naberan.com

NABERAN FRANCE SARL

Avenue de la République
ZA Poriguenor | 29730 Le Guilvinec (France)
+33 298 582 739 | david@naberan.com

BMM - POULIE DE NETSONDE · **BMM - NETSONDE BLOCK** · BMM - PASTECA P/ CABLE NETSONDA
 ACIER INOX · **STAINLESS STEEL** · ACERO INOX



REF	SWL Ton	A mm	B mm	C mm	D mm	F mm	J mm	M mm	N mm	O mm	P mm	S mm	T mm	U mm	POID WEIGHT PESO Kg
4PAKT300-NET	1,2	670	44	99	300	55	6	34		12	125	75	470	130	8
4PAKT300-1-NET	4	790	44	99	300	45	10	40	42	22	125	75	470	250	22
4PAKT500-1-NET	4	885	44	99	500	45	10	40	42	22	125	75	470	250	33

Ou
 Either
 o



Roulements à billes graissables.
Ball bearing, greaseable.
 Rodamientos de bolas, para Engrasar.

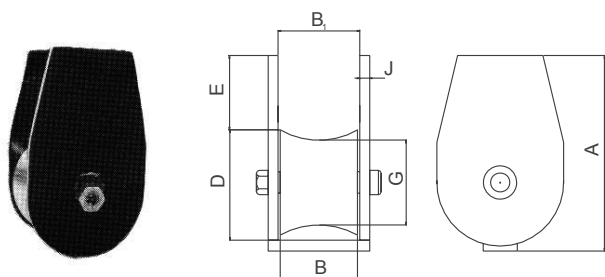
NABERAN SAREAK S.L.

Mutrikuko Industrialdea 15
 20830 Mutriku - Gipuzkoa
 +34 943 195 122 | naberan@naberan.com

NABERAN FRANCE SARL

Avenue de la République
 ZA Poriguenor | 29730 Le Guilvinec (France)
 +33 298 582 739 | david@naberan.com

BMM - POULIE GUIDE-CÂBLE · **BMM - FAIRLEAD BLOCKS** · BMM - PASTECA CONDUCTORA
BLEU PEINT · **BLUE PAINTED** · PINTADA DE AZUL



REF		A mm	B mm	B1 mm	D mm	E mm	G mm	J mm	S mm	POID WEIGHT PESO Kg
4PAKL130-1	□	235	100	100	130	100	85	10	110	10,9
4PAKL170-	□ □	300	100	100	170	130	125	10	115	20,4
4PAKL215-	□ □	340	100	100	215	117	164	10	130	27
4PAKL230-	□ □	390	120	120	230	135	175	12	140	43,5
4PAKL300-	□ □	475	120	120	300	155	240	12	180	53,8
4PAKL370-	□ □	615	140	140	370	220	285	12	210	86,7
4PAKL400-2	□	660	180	180	400	230	300	15	225	118
4PAKL500-2	□	770	180	180	500	255	380	20	265	213
4PAKL600-2	□	895	180	185	600	280	480	20	330	309
4PAKL650-2	□	960	240	220	650	305	500	20	330	415

KL 370-1 Uniquement avec Roulement rouleaux.
Available only with roller bearing.
Solo con rodamientos de rodillos.

KL 400-2 Uniquement avec Roulement a billes.
KL 500-2 **Available only with ball bearing.**
KL 600-2 Solo con rodamiento de bolas.
KL 650-2

Les poulies doivent être commandées:

BMM- blocks must be ordered with:

Pastecas BMM se deben pedir con:

Indiquer dans la commande P.E KT2-IEGC.

On order add letter, e.g. KT 2-IEGC.

Indicar en su pedido p.e. KT 2-IEGC.

Ou
Either 1 Roulements à billes, graisseable.
o **Ball bearing, greaseable.**
Rodamientos de bolas, para engrasar.

Ou
Either 0 Bague a bronze a graisser.
o **Bronze bushing; All bronze bushings are greaseable.**
Cojinete de bronce; se pueden engrasar.

Avec un prix supplémentaire.

Against extra charge are all blocks available:

Todas las pastecas estan disponibles contra suplemento de precio.

'H' Rea Trempé au feu.
Flame hardened sheave.
Rueda templada a fuego.

'G' Galvanize.
Galvanized.
Galvanizadas.

NABERAN SAREAK S.L.

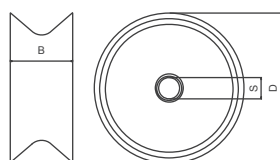
Mutrikuko Industrialdea 15
20830 Mutriku - Gipuzkoa
+34 943 195 122 | naberan@naberan.com

NABERAN FRANCE SARL

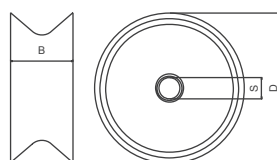
Avenue de la République
ZA Poriguenor | 29730 Le Guilvinec (France)
+33 298 582 739 | david@naberan.com

COMPOSANTS · COMPONENTS · COMPONENTES

REAS · **SHEAVES** · RUEDAS



ROULEMENT A BILLES / ROULEAUX
BALL / ROLLER BEARING
RODAMIENTO DE BOLAS / RODILLOS

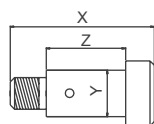


BAGUE DE BRONZE
BRONZE BUSHING
COJINETE DE BRONCE

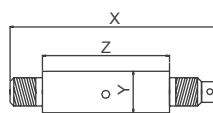
REF	B mm	D mm	R mm	S mm	POID WEIGHT PESO Kg
4PASK130-1	100	130	60	25	5,5
4PASK170-1	100	170	60	25	11,7
4PASK215-1	100	215	80	35	18,3
4PASK230-1	120	230	80	35	19,5
4PASK300-1	120	300	80	35	29,8
4PASK370-1	140	370	100	45	50,5
4PASK400-2	180	400	140	60	85
4PASK500-2	180	500	170	70	130
4PASK600-2	180	600	170	70	150
4PASK650-2	240	650	170	70	240

REF	B mm	D mm	R mm	S mm	POID WEIGHT PESO Kg
4PASK130-0	100	130	37	25	5,5
4PASK170-0	100	170	37	25	12
4PASK215-0	100	215	56	35	18
4PASK230-0	120	230	56	38	20,1
4PASK300-0	120	300	56	38	30,7

GOUPILLES · **PINS** · PASADORES



ROULEMENT A BILLES
BALL BEARING
RODAMIENTO DE BOLAS



ROULEMENT A BILLES
BALL BEARING
RODAMIENTO DE BOLAS

REF	X mm	Y mm	Z mm	POID WEIGHT PESO Kg
4PAK130-1	155	25	123	0,7
4PAK170-1	155	25	123	0,7
4PAK215-1	158	35	117	1,3
4PAK230-1	190	35	133	1,5
4PAK300-1	190	35	133	1,5
4PAK370-1	234	45	152	3,2

REF	X mm	Y mm	Z mm	POID WEIGHT PESO Kg
4PAK130-1	155	25	123	0,7
4PAK170-1	155	25	123	0,7
4PAK215-1	158	35	117	1,3
4PAK230-1	190	35	133	1,5
4PAK300-1	190	35	133	1,5
4PAK370-1	234	45	152	3,2



BAGUE DE BRONZE
BRONZE BUSHING
COJINETE DE BRONCE

REF	X mm	Y mm	Z mm	POID WEIGHT PESO Kg
4PAK400-2	330	60	212	10,9
4PAK500-2	340	70	225	12,9
4PAK600-2	340	70	225	12,9
4PAK650-2	404	70	285	14,6

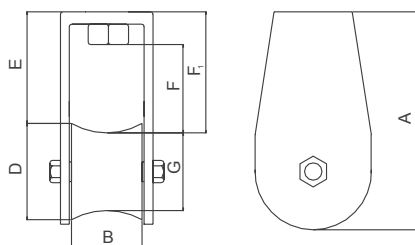
NABERAN SAREAK S.L.

Mutrikuko Industrialdea 15
20830 Mutriku - Gipuzkoa
+34 943 195 122 | naberan@naberan.com

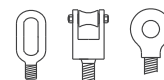
NABERAN FRANCE SARL

Avenue de la République
ZA Poriguenor | 29730 Le Guilvinec (France)
+33 298 582 739 | david@naberan.com

BMM - POULIE DE PORTIQUE · **BMM - TRAWL BLOCK** · BMM - PASTECA_ARRASTRE
BLEU PEINT · **BLUE PAINTED** · PINTADA DE AZUL



TETES · **HEADS** · CABEZAS



REF	SWL 5:1 Ton	A mm	B mm	D mm	E mm	F mm	F1 mm	G mm	J mm	POID WEIGHT PESO Kg
4PAK130 - □ □	4	240	100	130	110	85	133	85	10	16
4PAK170 - □ □	6	305	100	170	140	100	163	125	10	25
4PAK215 - □ □	6	355	100	215	132	110	165	164	10	36,5
4PAK230 - □ □	9	405	120	230	150	110	180	170	12	45
4PAK240 - □ □	9	420	150	240	190	140	220	170	12	54
4PAK300 - □ □	11	475	120	300	170	120	200	240	12	64
4PAK370-1 □	13	580	140	370	240	140	285	285	12	110
4PAK400-2 □	15	670	180	400	245	210	305	300	15	180

Les poulies doivent être commandées:

BMM- blocks must be ordered with:

Pastecas BMM se deben pedir con:

Indiquer dans la commande P.E K240-IEG.

On order add letter, e.g. K240-IEG.

Indicar en su pedido p.e. K240-IEG.

Ou
Either
o



Roulements à billes.
Ball bearing.
Rodamientos de bolas.

Ou
Either
o



Bague a bronze a graisser.
Bronze bushing; All bronze bushings are greaseable.
Cojinete de bronce; se pueden engrasar.

Ou
Either
o



Oeil Ovale giratoire.
Swivel eye.
Gancho giratorio.

Ou
Either
o



Fourche Giratoire.
Swivel fork.
Gancho giratorio.

Ou
Either
o



Oeil rond giratoire
Swivel shackle eye.
Ojo p/grillete giratorio.

K400-2

Uniquement avec Roulement.

Available only with roller bearing.

Solo con rodamientos de rodillos.

Avec un prix supplémentaire.

Against extra charge are all blocks available.

Todas las pastecas estan disponibles contra suplemento de precio.

'C'

Testé et certifié.
Tested with certificate.
Probadas y certificadas.

'H'

Rea Trempé au feu.
Flame hardened sheave.
Rueda templada a fuego.

'G'

Galvanize.
Galvanized.
Galvanizadas.

NABERAN SAREAK S.L.

Mutrikuko Industrialdea 15
20830 Mutriku - Gipuzkoa
+34 943 195 122 | naberan@naberan.com

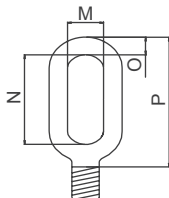
NABERAN FRANCE SARL

Avenue de la République
ZA Poriguenor | 29730 Le Guilvinec (France)
+33 298 582 739 | david@naberan.com

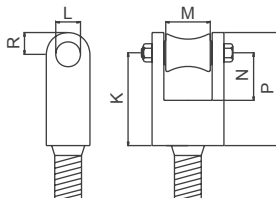
COMPOSANTS · COMPONENTS · COMPONENTES

TETE · TOP HEAD · CABEZA

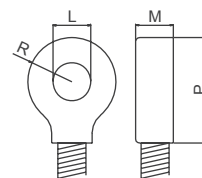
OEIL OVALE GIRATOIRE
SWIVEL EYE
CANCAMO GIRATORIO



FOURCHE GIRATOIRE
SWIVEL FORK
HORQUILLA GIRATORIA

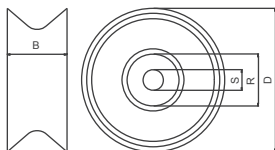


OEIL ROND GIRATOIRE
SWIVEL SHACKLE EYE
OJO P. GRILLETE GIRATORIO



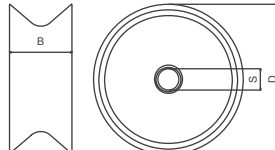
REF	M mm	N mm	O mm	P mm	K mm	L mm	M mm	N mm	R mm	P mm	L mm	M mm	R mm	P mm
K130	33	82	24	134	104	23	40	65	30	134	26	42	35	93
K170	40	95	28	153	104	23	40	65	30	134	33	46	42	100
K215	40	110	28	181	104	23	40	65	30	134	33	46	42	100
K230	48	100	32	192	140	29	52	84	35	175	39	50	45	115
K240	48	100	32	192	140	29	52	84	35	175	39	50	45	115
K300	48	105	38	203	140	29	52	84	35	175	43	58	50	125
K370	58	110	50	220	165	39	70	103	50	215	51	72	60	145
K400	58	110	50	225	165	51	85	115	65	260	51	72	60	145

REAS · SHEAVES · RUEDAS



ROULEMENT A BILLES
BALL BEARING
RODAMIENTO DE BOLAS

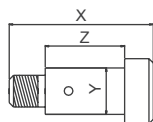
REF	B mm	D mm	R mm	S mm	POID WEIGHT PESO Kg
4PASK130-1	100	130	60	25	5,5
4PASK170-1	100	170	60	25	11,7
4PASK215-1	100	215	80	35	18,3
4PASK230-1	120	230	80	35	19,5
4PASK240-1	150	240	80	35	24
4PASK300-1	120	300	80	35	29,8
4PASK370-1	140	370	100	45	50,5
4PASK400-2	180	400	140	85	85



BAGUE DE BRONZE
BRONZE BUSHING
COJINETE DE BRONCE

REF	B mm	D mm	R mm	S mm	POID WEIGHT PESO Kg
4PASK130-0	100	130	37	25	5,7
4PASK170-0	100	170	37	25	12
4PASK215-0	100	215	56	35	18,5
4PASK230-0	120	230	56	38	20,1
4PASK240-0	150	240	56	38	24
4PASK300-0	120	300	56	38	30,7

GOUPILLES · PINS · PASADORES



ROULEMENT A BILLES
BALL BEARING
RODAMIENTO DE BOLAS

REF	X mm	Y mm	Z mm	POID WEIGHT PESO Kg
4PAK130-1	155	25	123	0,7
4PAK170-1	155	25	123	0,7
4PAK215-1	158	35	117	1,3
4PAK230-1	190	35	133	1,5
4PAK240-1	220	35	165	1,8
4PAK300-1	190	35	133	1,5
4PAK370-1	234	45	152	3,2
4PAK400-2	330	60	212	10,9



BAGUE DE BRONZE
BRONZE BUSHING
COJINETE DE BRONCE

REF	X mm	Y mm	Z mm	POID WEIGHT PESO Kg
4PAK130-0	155	25	123	0,6
4PAK170-0	155	25	123	0,7
4PAK215-0	158	35	117	1,3
4PAK230-0	190	38	133	1,6
4PAK240-0	220	35	165	1,8
4PAK300-0	190	38	133	1,6

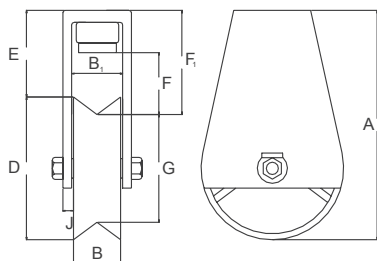
NABERAN SAREAK S.L.

Mutrikuko Industrialdea 15
20830 Mutriku - Gipuzkoa
+34 943 195 122 | naberan@naberan.com

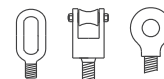
NABERAN FRANCE SARL

Avenue de la République
ZA Poriguenor | 29730 Le Guilvinec (France)
+33 298 582 739 | david@naberan.com

BMM - POULIE DE PORTIQUE · **BMM - TRAWL BLOCK** · BMM - PASTECA_ARRASTRE
BLEU PEINT · **BLUE PAINTED** · PINTADA DE AZUL



TETES · **HEADS** · CABEZAS



REF		SWL 5:1 Ton	MAX LOAD ON HEAD FITTING mm	TEST LOAD mm	A mm	B mm	B1 mm	D mm	E mm	F mm	F1 mm	G mm	J mm	POID WEIGHT PESO Kg
4PAK370-2A	□	13	26	52	580	140	140	370	260	120	305	285	12	115
4PAK400-2A	□	15	30	55	670	180	180	400	245	180	305	300	15	145
4PAK500-2A	□	20	40	70	785	180	180	500	285	185	345	380	20	230
4PAK600-2A	□	30	60	95	910	180	180	600	310	190	380	480	20	260
4PAK650-2A	□	30	60	95	975	240	220	650	335	225	415	500	20	500
4PAK800-2A	□	40	80	120	1120	240	220	800	340	240	440	600	20	750
4PAK1000-2A	□	60	120	165	1485	260	240	1000	485	270	570	825	25	1.320

Les poulies doivent être commandées:

BMM- blocks must be ordered with:

Pastecas BMM se deben pedir con:

Indiquer dans la commande P.E K400-2AEG.

On order add letter, e.g. K400-2AEG.

Indicar en su pedido p.e. K400-2AEG.

Ou
Either
o



Oeil Ovale giratoire.
Swivel eye.
Gancho giratorio.

Ou
Either
o



Fourche Giratoire.
Swivel fork.
Gancho giratorio.

Ou
Either
o



Oeil rond giratoire.
Swivel shackle eye.
Ojo p/grillete giratorio.

Ou
Either
o



Oeil rond pour icedavit.
Eye for icedavit.
Ojo para icedavit

Sont uniquement livrées avec les deux cotés entiers.

Are only supplied with full sideplates.

Solo con lados enteros.

Avec un prix supplémentaire.

Against extra charge are all blocks available.

Todas las pastecas estan disponibles contra suplemento de precio.

‘C’

Testé et certifié.
Tested with certificate.
Probadas y certificadas.

‘H’

Rea Trempé au feu.
Flame hardened sheave.
Rueda templada a fuego.

‘G’

Galvanize.
Galvanized.
Galvanizadas.

NABERAN SAREAK S.L.

Mutrikuko Industrialdea 15
20830 Mutriku - Gipuzkoa
+34 943 195 122 | naberan@naberan.com

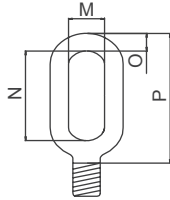
NABERAN FRANCE SARL

Avenue de la République
ZA Poriguenor | 29730 Le Guilvinec (France)
+33 298 582 739 | david@naberan.com

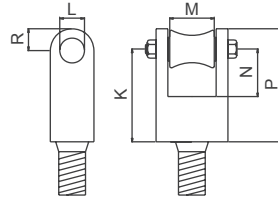
COMPOSANTS · COMPONENTS · COMPONENTES

TETE · TOP HEAD · CABEZA

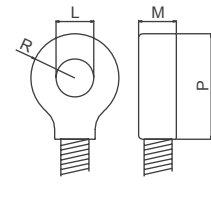
OEIL OVALE GIRATOIRE
SWIVEL EYE
CANCAMO GIRATORIO



FOURCHE GIRATOIRE
SWIVEL FORK
HORQUILLA GIRATORIA

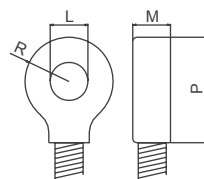


OEIL ROND GIRATOIRE
SWIVEL SHACKLE EYE
OJO P. GRILLETE GIRATORIO



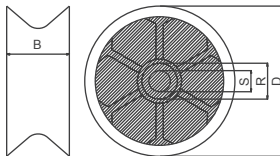
REF	M mm	N mm	O mm	P mm	K mm	L mm	M mm	N mm	R mm	P mm	L mm	M mm	R mm	P mm
K370	58	110	50	220	165	39	70	103	50	215	51	72	60	145
K400	58	110	50	225	195	51	85	115	65	260	51	72	60	145
K500	75	140	50	280	195	51	85	115	65	260	58	80	70	160
K600	78	155	70	335	230	58	90	140	75	305				
K650	78	155	70	335	230	58	90	140	75	305				
K800	78	155	70	335	250	81	90	180	90	340				

OEIL POUR ICEDAVIT
EYE FOR ICEDAVIT
OJO PARA ICEDAVIT

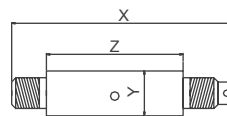


REF	L mm	M mm	P mm	R mm	Bronze hole Agujero de bronce mm
K400-2A	78	70	180	80	91
K500-2A	78	70	180	85	91
K600-2A	106	100	235	100	116
K650-2A	106	100	235	100	116
K800-2A	106	100	260	110	116
K1000-2A	125	180	310	130	140

REAS · SHEAVES · RUEDAS



ROULEMENT A BILLES / ROULEAUS
BALL / ROLLER BEARING
RODAMIENTO DE BOLAS / RODILLOS



REF	B mm	D mm	R mm	S mm	POID WEIGHT PESO Kg
4PASK370-2	140	370	100	45	50,5
4PASK400-2	180	400	140	60	85
4PASK500-2	180	500	170	70	130
4PASK600-2	180	600	170	70	150
4PASK650-2	240	650	170	70	240
4PASK800-2	240	800	200	85	370
4PASK1000-2	260	1000	250	123	600

REF	X mm	Y mm	Z mm	POID WEIGHT PESO Kg
4PAK370-2	234	45	162	3,2
4PAK400-2	330	60	212	10,9
4PAK500-2	340	70	225	12,9
4PAK600-2	340	70	225	12,9
4PAK650-2	404	70	285	14,6
4PAK800-2	427	85	287	21,7
4PAK1000-2	475	123	323	33

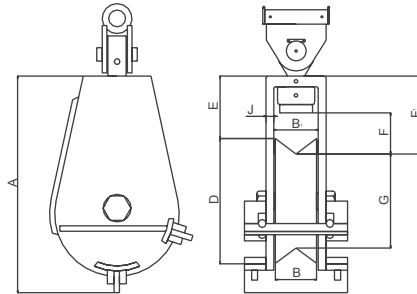
NABERAN SAREAK S.L.

Mutrikuko Industrialdea 15
20830 Mutriku - Gipuzkoa
+34 943 195 122 | naberan@naberan.com

NABERAN FRANCE SARL

Avenue de la République
ZA Poriguenor | 29730 Le Guilvinec (France)
+33 298 582 739 | david@naberan.com

BMM- POULIE DE PORTIQUE CENTRAL · **BMM- TRAWL BLOCK CENTRE** · BMM- PASTECA_ARRASTRE CENTRAL
BLEU PEINT · **BLUE PAINTED** · PINTADA DE AZUL



TETES · **HEADS** · CABEZAS



REF	SWL 5:1 Ton	A mm	B mm	C mm	D mm	E mm	F mm	F1 mm	G mm	J mm	POID WEIGHT PESO Kg
4PAKM650-2A □	30	975	240	220	650	335	225	415	500	20	535
4PAKM800-2A □	45	1120	240	220	800	340	240	440	600	20	795

NABERAN SAREAK S.L.

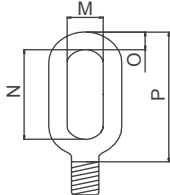
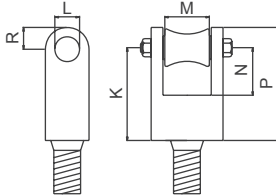
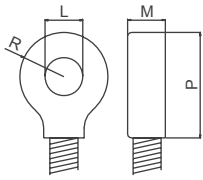
Mutrikuko Industrialdea 15
20830 Mutriku - Gipuzkoa
+34 943 195 122 | naberan@naberan.com

NABERAN FRANCE SARL

Avenue de la République
ZA Poriguenor | 29730 Le Guilvinec (France)
+33 298 582 739 | david@naberan.com

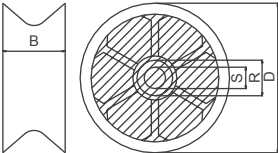
COMPOSANTS · COMPONENTS · COMPONENTES

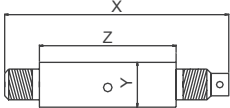
TETE · TOP HEAD · CABEZA

<p>OEIL OVALE GIRATOIRE SWIVEL EYE CANCAMO GIRATORIO</p> 										
<p>FOURCHE GIRATOIRE SWIVEL FORK HORQUILLA GIRATORIA</p> 										
<p>OEIL ROND GIRATOIRE SWIVEL SHACKLE EYE OJO P_GRILLETE GIRATORIO</p> 										
REF	M mm	N mm	O mm	P mm	K mm	L mm	M mm	N mm	R mm	P mm
KM650	78	155	70	335	230	58	90	140	75	305
KM800	78	155	70	335	250	81	90	180	90	340

REF	L mm	M mm	P mm	R mm	Bronze hole Agujero de bronce mm
KM650-2A	106	100	235	100	116
KM800-2A	106	100	260	110	116

REAS · SHEAVES · RUEDAS

 <p>ROULEMENT A BILLES / ROULEAUS BALL / ROLLER BEARING RODAMIENTO DE BOLAS / RODILLOS</p>					
REF	B mm	D mm	R mm	S mm	POID WEIGHT PESO Kg
4PASK400-2	180	400	140	60	85
4PASK500-2	180	500	170	70	130
4PASK600-2	180	600	170	70	150
4PASK650-2	240	650	170	70	240
4PASK800-2	240	800	200	85	370
4PASK1000-2	260	1000	250	123	600

				
REF	X mm	Y mm	Z mm	POID WEIGHT PESO Kg
4PAK400-2	330	60	212	10,9
4PAK500-2	340	70	225	12,9
4PAK600-2	340	70	225	12,9
4PAK650-2	404	70	285	14,6
4PAK800-2	427	85	287	21,7
4PAK1000-2	475	123	323	33

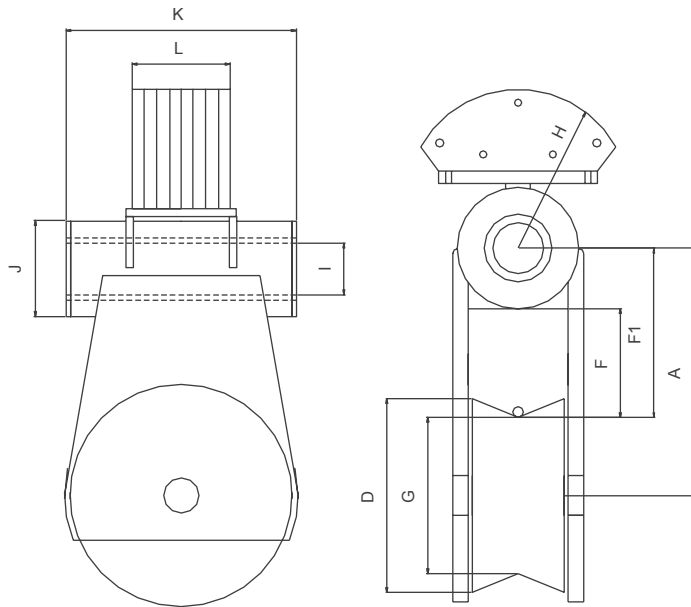
NABERAN SAREAK S.L.

Mutrikuko Industrialdea 15
20830 Mutriku - Gipuzkoa
+34 943 195 122 | naberan@naberan.com

NABERAN FRANCE SARL

Avenue de la République
ZA Poriguenor | 29730 Le Guilvinec (France)
+33 298 582 739 | david@naberan.com

POULIE DE CONTREPOID · **BLOCK W/CONTRAWEIGHT** · PASTECA_CONTRAPESO



REF	SWL 5:1 Ton	A mm	B mm	B1 mm	D mm	F mm	F1 mm	G mm	H mm	I mm	J mm	K mm	L mm	POID WEIGHT PESO Kg
4PAKK650-2H	30	595	240	228	650	240	260	470	500	119	236	560	230	
4PAKK800-2H	40	670	240	228	800	240	360	600	500	119	236	560	300	

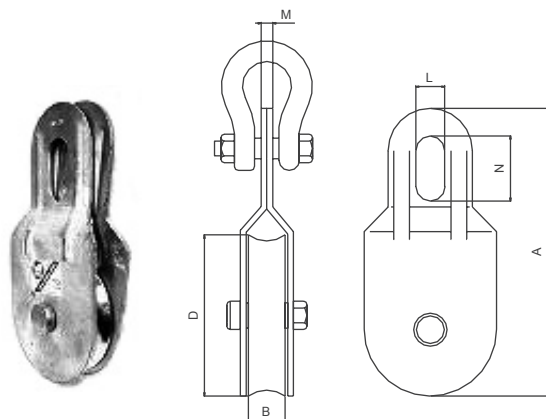
NABERAN SAREAK S.L.

Mutrikuko Industrialdea 15
20830 Mutriku - Gipuzkoa
+34 943 195 122 | naberan@naberan.com

NABERAN FRANCE SARL

Avenue de la République
ZA Poriguenor | 29730 Le Guilvinec (France)
+33 298 582 739 | david@naberan.com

BMM- POULIE OUVERTE · BMM- SWING BLOCK · BMM- PASTECA ABRIDORA



REA EN NYLON OU EN ACIER
 NYLON OR STEEL SHEAVE
 RUEDA EN NYLON O EN ACERO

GALVANIZÉ · GALVANIZED · GALVANIZADOS

REF	SWL 5:1 Ton	A mm	B mm	D mm	M mm	L mm	N mm	MAX WIRE mm	POID WEIGHT PESO Kg
4PAKSW1-NG	1	190	22	80	13	23	48	16	1
4PAKSW1-NG-30	1	190	30	80	13	23	48	24	1,2
4PAKSW1-IG	1	190	22	80	13	23	48	16	1,5
4PAKSW1-IG-30	1	190	30	80	13	23	48	24	1,8
4PAKSW1-OG	1	190	22	80	13	23	48	16	1,5
4PAKSW1-OG-30	1	190	30	80	13	23	48	24	1,8
4PAKSW2-NG	2	255	24	110	15	28	56	18	1,9
4PAKSW2-IG	2	255	24	110	15	28	56	18	2,9
4PAKSW2-OG	2	255	24	110	15	28	56	18	3
4PAKSW3-NG	3	350	28	150	16	40	60	20	4
4PAKSW3-IG	3	350	28	150	16	40	60	20	6,3
4PAKSW3-OG	3	350	28	150	16	40	60	20	6,4

INOX · STAINLESS STEEL · INOXIDABLE

REF	SWL 5:1 Ton	A mm	B mm	D mm	M mm	L mm	N mm	MAX WIRE mm	POID WEIGHT PESO Kg
4PAKSW1-ISS	1	190	22	80	24	13	48	16	1,6
4PAKSW2-ISS	2	255	24	110	28	15	56	20	2,9

NABERAN SAREAK S.L.

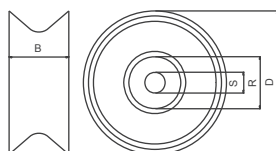
Mutrikuko Industrialdea 15
 20830 Mutriku - Gipuzkoa
 +34 943 195 122 | naberan@naberan.com

NABERAN FRANCE SARL

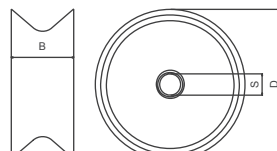
Avenue de la République
 ZA Poriguenor | 29730 Le Guilvinec (France)
 +33 298 582 739 | david@naberan.com

COMPOSANTS · COMPONENTS · COMPONENTES

REAS · SHEAVES · RUEDAS



ROULEMENT A BILLES
BALL BEARING
RODAMIENTO DE BOLAS

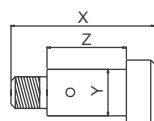


BAGUE DE BRONZE
BRONZE BUSHING
COJINETE DE BRONCE

REF	B mm	D mm	R mm	S mm	POID WEIGHT PESO Kg
4PASKSW1-N	22	80		17	0,15
4PASKSW1-I	22	80	40	17	0,60
4PASKSW1-ISS	22	80	40	17	0,60
4PASKSW2-N	24	110		20	0,25
4PASKSW2-I	24	110	47	20	1,25
4PASKSW1-ISS	24	110	47	20	1,25
4PASKSW3-N	28	150		25	0,55
4PASKSW3-I	28	150	52	20	2,65

REF	B mm	D mm	S mm	POID WEIGHT PESO Kg
4PASKSW1-0	22	80	20	0,75
4PASKSW2-0	24	110	25	1,3
4PASKSW3-0	28	150	25	2,6

GOUPILLES · PINS · PASADORES



ROULEMENT A BILLES
BALL BEARING
RODAMIENTO DE BOLAS

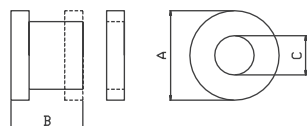


BAGUE DE BRONZE
BRONZE BUSHING
COJINETE DE BRONCE

REF	X mm	Y mm	Z mm	POID WEIGHT PESO Kg
4PAPKSW1-N	50	17	28	0,1
4PAPKSW1-I	50	17	28	0,1
4PAPKSW1-ISS	50	20	28	0,1
4PAPKSW2-N	52	20	30	0,15
4PAPKSW2-I	52	20	30	0,15
4PAPKSW1-ISS	52	20	30	0,15
4PAPKSW3-N	67	20	41	0,2
4PAPKSW3-I	67	20	41	0,2

REF	X mm	Y mm	Z mm	POID WEIGHT PESO Kg
4PAPKSW1-0	57	20	28	0,1
4PAPKSW2-0	61	25	30	0,15
4PAPKSW3-0	67	25	35	0,2

ACCESORIE · ACCESORIO · ACCESORIE



SUPPORT DE SUSPENSION
MOUNTING FITTING
SOPORTE SUSPENSIÓN

REF	A mm	B mm	C mm	POID WEIGHT PESO Kg	POUR MANILLE FOR SHACKLE POR GRILLETE mm
KSW 1-BESLAG	32	21	17,5	0,1	F12 HGPS
KSW 2-BESLAG	40	28	20,5	0,2	F16 HGPS

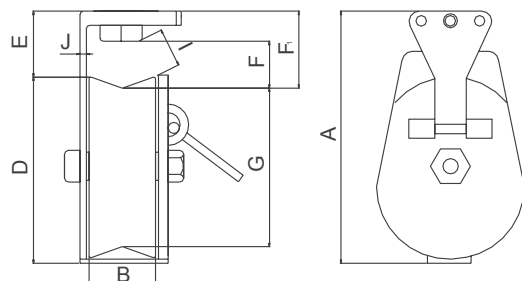
NABERAN SAREAK S.L.

Mutrikuko Industrialdea 15
20830 Mutriku - Gipuzkoa
+34 943 195 122 | naberan@naberan.com

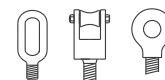
NABERAN FRANCE SARL

Avenue de la République
ZA Poriguenor | 29730 Le Guilvinec (France)
+33 298 582 739 | david@naberan.com

BMM - POULIE DE PORTIQUE OUVERTE · **BMM - OPENED TRAWL BLOCK** · BMM - PASTECA_ARRASTRE_ABIERTA
BLEU PEINT · **BLUE PAINTED** · PINTADA DE AZUL



TETES · **HEADS** · CABEZAS



REF	SWL 5:1 Ton	A mm	B mm	D mm	E mm	F mm	F1 mm	G mm	I mm	J mm	POID WEIGHT PESO Kg
4PAKO300-1 □	11	485	120	300	170	125	205	240	90	12	69
4PAKO370-2 □	13	600	140	380	190	150	235	285	100	12	125
4PAKO400-2 □	15	670	180	400	210	175	270	300	125	15	187
4PAKO500-2 □	20	825	180	500	260	185	310	380	115	20	300

Les poulies doivent être commandées:
BMM- blocks must be ordered with:
Pastecas BMM se deben pedir con:

Indiquer dans la commande P.E KO300-IE.
On order add letter, e.g. KO300-IE.
Indicar en su pedido p.e. KO300-IE.

Ou
Either
o

E Oeil Ovale giratoire.
Swivel eye.
Gancho giratorio.

Ou
Either
o

F Fourche Giratoire.
Swivel fork.
Gancho giratorio.

Ou
Either
o

S Oeil rond giratoire.
Swivel shackle eye.
Ojo p/grillete giratorio.

KL 300-1 Uniquement avec roulements rouleaux.
Available only with roller bearing.
Solo con rodamientos de rodillos.

KL 370-2 Uniquement avec roulements à billes.
KL 400-2 **Available only with ball bearing.**
KL 500-2 Solo con rodamiento de bolas.

Avec un prix supplémentaire.
Against extra charge are all blocks available.
Todas las pastecas estan disponibles contra suplemento de precio.

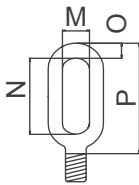
'C' Testé et certifié.
Tested with certificate.
Probadas y certificadas.

'H' Rea Trempé au feu.
Flame hardened sheave.
Rueda templada a fuego.

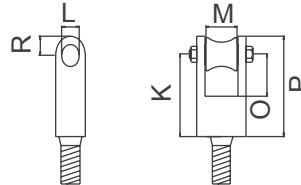
COMPOSANTS · COMPONENTS · COMPONENTES

TETE · TOP HEAD · CABEZA

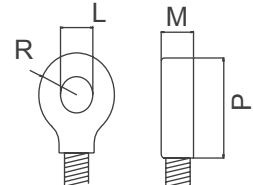
OEIL OVALE GIRATOIRE
SWIVEL EYE
CANCAMO GIRATORIO



FOURCHE GIRATOIRE
SWIVEL FORK
HORQUILLA GIRATORIA

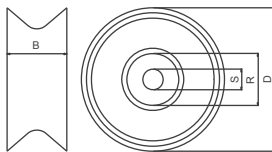


OEIL ROND GIRATOIRE
SWIVEL SHACKLE EYE
OJO P. GRILLETE GIRATORIO



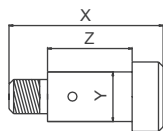
REF	M mm	N mm	O mm	P mm	K mm	L mm	M mm	N mm	R mm	P mm	L mm	M mm	R mm	P mm
KO 300-1	48	105	38	203	140	29	52	84	35	175	43	58	50	125
KO 370-2	58	110	50	220	165	39	70	103	50	215	51	72	60	145
KO 400-2	58	110	50	225	195	51	85	115	65	260	51	72	60	145
KO 500-2	75	140	50	280	195	51	85	115	65	260	58	80	70	160

REAS · SHEAVES · RUEDAS

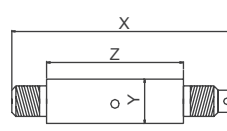


REF	B mm	D mm	R mm	S mm	POID WEIGHT PESO Kg
4PASK300-1	12	300	80	35	29,8
4PASK370-2	140	370	100	45	50,5
4PASK400-2	180	400	140	60	90
4PASK500-2	180	500	170	70	130

GOUPILLES · PINS · PASADORES



REF	X mm	Y mm	Z mm	POID WEIGHT PESO Kg
4PAK300-1	190	35	133	1,5
4PAK370-2	234	45	152	3,2



REF	X mm	Y mm	Z mm	POID WEIGHT PESO Kg
4PAK400-2	330	60	212	10,9
4PAK500-2	340	70	225	12,9

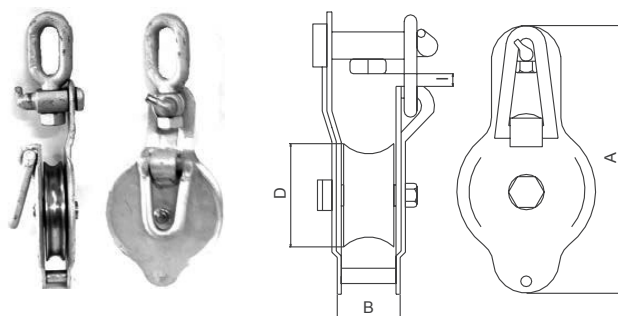
NABERAN SAREAK S.L.

Mutrikuko Industrialdea 15
20830 Mutriku - Gipuzkoa
+34 943 195 122 | naberan@naberan.com

NABERAN FRANCE SARL

Avenue de la République
ZA Poriguenor | 29730 Le Guilvinec (France)
+33 298 582 739 | david@naberan.com

BMM- POULIE OUVERTE · **BMM- SNATCH BLOCK** · BMM- PASTECA_DISPARO
 GALVANIZÉ · **GALVANIZED** · GALVANIZADOS



TETES · **HEADS** · CABEZAS



REF	SWL 5:1 Ton	A mm	B mm	D mm	I mm	MAX WIRE mm	POID WEIGHT PESO Kg
4PAKS2- □ □	2	225	24	110	23	18	3,7
4PAKS3 - □ □	3	300	28	150	30	18	7,5
4PAKS4 - □ □	4,5	330	35	185	33	22	13,5
4PAKS6 - □ □	6	378	41	210	35	24	19,4

Les poulies doivent être commandées:

BMM- blocks must be ordered with:

Pastecas BMM se deben pedir con:

Indiquer dans la commande P.E KS2-1E.

On order add letter, e.g. KS2-1E.

Indicar en su pedido p.e. KS2-1E.

- Ou
Either
o
- 1 Roulements: KS1et KS2 avec roulements fermé; KS3, KS4, KS6 avec roulements graissables.
Ball bearing; KS1, KS2 sealed ball bearings; KS3, KS4, KS6 greaseable ball bearings.
 Rodamientos; KS1, KS2 c/rodamientos cerrados; KS3, KS4, KS6 c/rodamientos para engrasar.
- Ou
Either
o
- 0 Bague a bronze a graisser.
Bronze bushing; All bronze bushings are greaseable.
 Cojinete de bronce; se pueden engrasar.
- Ou
Either
o
- E Oeil Ovale giratoire.
Swivel eye.
 Cancamo giratorio.
- Ou
Either
o
- K Croc giratoire. Reduction 50% dan le SWL.
Swivel hook. If the block is used with hook as suspension, the SWL is reduced with 50%.
 Gancho giratorio. Si la pasteca se monta con gancho giratorio, la SWL se reduce en un 50%.

Avec un prix supplémentaire.

Against extra charge are all blocks available.

Todas las pastecas estan disponibles contra suplemento de precio.

‘C’ Testé et certifié.
Tested with certificate.
 Probadas y certificadas.

‘H’ Rea Trempé au feu.
Flame hardened sheave.
 Rueda templada a fuego.

‘P’ Bague de securité.
Split pin at locking device.
 Punzon de seguridad.

NABERAN SAREAK S.L.

Mutrikuko Industrialdea 15
 20830 Mutriku - Gipuzkoa
 +34 943 195 122 | naberan@naberan.com

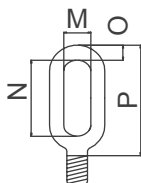
NABERAN FRANCE SARL

Avenue de la République
 ZA Poriguenor | 29730 Le Guilvinec (France)
 +33 298 582 739 | david@naberan.com

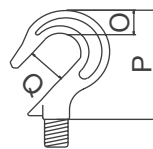
COMPOSANTS · **COMPONENTS** · COMPONENTES

TETE · **TOP HEAD** · CABEZA

OEIL OVALE GIRATOIRE
SWIVEL EYE
CANCAMO GIRATORIO

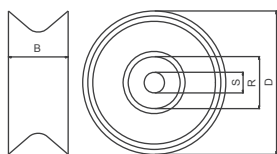


CROC GIRATOIRE
SWIVEL HOOK
GANCHO GIRATORIO

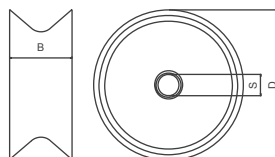


REF	M mm	N mm	O mm	P mm	O mm	P mm	Q mm
KS2	23	57	16	94	25	94	28
KS3	26	66	20	110	30	105	30
KS4	33	82	24	134	38	132	38
KS6	40	95	28	153	46	170	46

REAS · **SHEAVES** · RUEDAS



ROULEMENT A BILLES
BALL BEARING
RODAMIENTO DE BOLAS

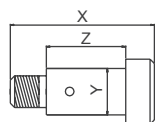


BAGUE DE BRONZE
BRONZE BUSHING
COJINETE DE BRONCE

REF	B mm	D mm	R mm	S mm	POID WEIGHT PESO Kg
4PASKS2-1	24	110	52	20	1,25
4PASKS3-1	28	150	47	20	2,65
4PASKS4-1	35	185	62	30	5,1
4PASKS6-1	42	210	76	30	7,7

REF	B mm	D mm	S mm	POID WEIGHT PESO Kg
4PASKS2-0	24	110	25	1,3
4PASKS3-0	28	150	25	2,6
4PASKS4-0	35	185	30	5,2
4PASKS6-0	42	210	30	7,6

GOUPILLES · **PINS** · PASADORES



ROULEMENT A BILLES
BALL BEARING
RODAMIENTO DE BOLAS



BAGUE DE BRONZE
BRONZE BUSHING
COJINETE DE BRONCE

REF	X mm	Y mm	Z mm	POID WEIGHT PESO Kg
4PAPKS2-1	52	20	30	0,15
4PAPKS3-1	67	20	41	0,2
4PAPKS4-1	75	30	43	0,4
4PAPKS6-1	85	30	51	0,45

REF	X mm	Y mm	Z mm	POID WEIGHT PESO Kg
4PAPKS2-0	61	25	30	0,25
4PAPKS3-0	67	25	35	0,3
4PAPKS4-0	75	30	43	0,4
4PAPKS6-0	85	30	51	0,45

NABERAN SAREAK S.L.

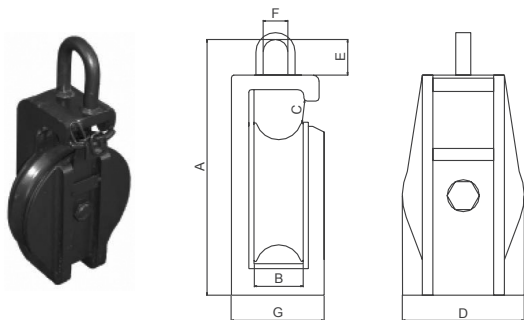
Mutrikuko Industrialdea 15
20830 Mutriku - Gipuzkoa
+34 943 195 122 | naberan@naberan.com

NABERAN FRANCE SARL

Avenue de la République
ZA Poriguenor | 29730 Le Guilvinec (France)
+33 298 582 739 | david@naberan.com

BMM - POULIE OUVERTE · BMM - OPENSIDED BLOCK · BMM - PASTECA BURRO

BLEU PEINT · BLUE PAINTED · PINTADA DE AZUL



REF	SWL 5:1 Ton	A mm	B mm	C mm	D mm	E mm	F mm	G mm	F/WIRE P/CABLE mm	POID WEIGHT PESO Kg
4PAKPBW09 - □ R	9	510	70	66	235	85	55	185	19-25	37
4PAKPBW09 - □ R	12	680	90	90	350	95	60	240	22-28	82

Les poulies doivent être commandées:

BMM- blocks must be ordered with:

Pastecas BMM se deben pedir con:

Indiquer dans la commande P.E KPBW09-2R

On order add letter, e.g. KPBW09-2R.

Indicar en su pedido p.e. KPBW09-2R.

Ou
Either
o

2

Roulements a rouleaux.
Roller bearing.
Rodamiento de rodillos, para engrasar.Ou
Either
o

0

Bague a bronze a graisser.
Bronze bushing; All bronze bushings are greaseable.
Cojinete de bronce; se pueden engrasar.

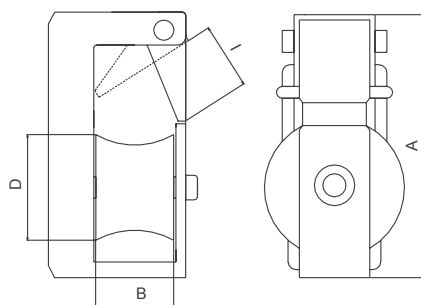
NABERAN SAREAK S.L.

Mutrikuko Industrialdea 15
20830 Mutriku - Gipuzkoa
+34 943 195 122 | naberan@naberan.com

NABERAN FRANCE SARL

Avenue de la République
ZA Poriguenor | 29730 Le Guilvinec (France)
+33 298 582 739 | david@naberan.com

BMM - POULIE OUVERTE · **BMM - SNATCH BLOCK** · BMM - PASTECA_DISPARO
 GALVANISÉE · **GALVANIZED** · GALVANIZADOS



TETES · **HEADS** · CABEZAS



REF	SWL 5:1 Ton	A mm	B mm	C mm	D mm	POID WEIGHT PESO Kg
4PAKS10	1	220	45	83	30	4,7
4PAKS20	1,5	220	45	83	30	5,4
4PAKS30	2,2	270	45	110	30	8,5

Les poulies doivent être commandées:
BMM- blocks must be ordered with:
 Pastecas BMM se deben pedir con:

Indiquer dans la commande P.E KS20-RGC.
On order add letter, e.g. KS20-RGC.
 Indicar en su pedido p.e. KS20-RGC.

Ou
Either
 o



Oeil Fixe.
Firm eye.
 Ojo firme.

Ou
Either
 o



Oeil Ovale giratoire
Swivel eye.
 Cancamo giratorio.

Avec un prix supplémentaire.
Against extra charge are all blocks available.
 Todas las pastecas estan disponibles contra suplemento de precio.

‘C’

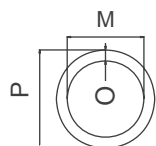
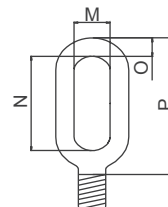
Testé et certifié.
Tested with certificate.
 Probadas y certificadas.

NABERAN SAREAK S.L.

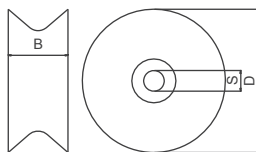
Mutrikuko Industrialdea 15
 20830 Mutriku - Gipuzkoa
 +34 943 195 122 | naberan@naberan.com

NABERAN FRANCE SARL

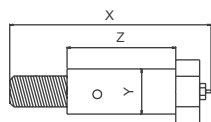
Avenue de la République
 ZA Poriguenor | 29730 Le Guilvinec (France)
 +33 298 582 739 | david@naberan.com

COMPOSANTS · **COMPONENTS** · COMPONENTESTETE · **TOP HEAD** · CABEZAOEIL ROND FIXE
FIRM EYE
OJO FIRMEOEIL OVALE GIRATOIRE
SWIVEL EYE
GANCHO GIRATORIO

REF	M mm	O mm	P mm	M mm	N mm	O mm	P mm
KS10	32	14	58	38	40	16	92
KS20	32	14	58	38	40	16	92
KS30	40	16	72	38	48	19	112

REAS · **SHEAVES** · RUEDASROULEMENT A BILLES/ROULEAUX
BALL BEARING
RODAMIENTO DE BOLAS

REF	B mm	D mm	S mm	POID WEIGHT PESO Kg
4PASKS10	45	83	20	1,5
4PASKS20	45	83	20	1,5
4PASKS30	45	110	20	2,3

GOUPILLES · **PINS** · PASADORESROULEMENT A BILLES
BALL BEARING
RODAMIENTO DE BOLAS

REF	X mm	Y mm	Z mm	POID WEIGHT PESO Kg
4PAPKS10	103	20	63	0,3
4PAPKS20	103	20	63	0,3
4PAPKS30	133	20	95	0,4

NABERAN SAREAK S.L.

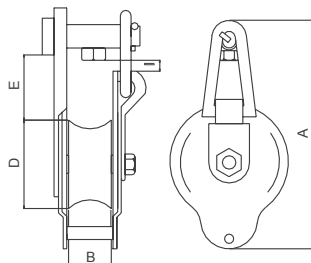
Mutrikuko Industrialdea 15
20830 Mutriku - Gipuzkoa
+34 943 195 122 | naberan@naberan.com

NABERAN FRANCE SARL

Avenue de la République
ZA Poriguenor | 29730 Le Guilvinec (France)
+33 298 582 739 | david@naberan.com

BMM - POULIE DE MANEUBRE · BMM - TACKLE BLOCKS · BMM - PASTECAS_LEVANTAR

BLEU PEINT · BLUE PAINTED · PINTADA DE AZUL



TETES · HEADS · CABEZAS



REF	SWL 5:1 Ton	A mm	B mm	D mm	E mm	I mm	POID WEIGHT PESO Kg
4PAKS40 □	3,5	250	45	100	45	38	7,5
4PAKS50 □	4,6	325	60	150	80	60	15,5
4PAKS60 □	6	375	60	215	50	50	24

Les poulies doivent être commandées:

BMM- blocks must be ordered with:

Pastecas BMM se deben pedir con:

Indiquer dans la commande P.E KS20-RGC.

On order add letter, e.g. KS20-RGC.

Indicar en su pedido p.e. KS20-RGC.

Ou
Either
oOeil Fixe.
Firm eye.
Ojo firme.Ou
Either
oOeil Ovale giratoire.
Swivel eye.
Gancho giratorio.

Avec un prix supplémentaire.

Against extra charge are all blocks available.

Todas las pastecas estan disponibles contra suplemento de precio.

'C'

Testé et certifié.

Tested with certificate.

Probadas y certificadas.

NABERAN SAREAK S.L.

Mutrikuko Industrialdea 15

20830 Mutriku - Gipuzkoa

+34 943 195 122 | naberan@naberan.com

NABERAN FRANCE SARL

Avenue de la République

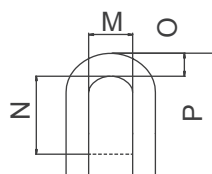
ZA Poriguenor | 29730 Le Guilvinec (France)

+33 298 582 739 | david@naberan.com

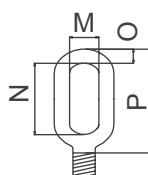
COMPOSANTS · **COMPONENTS** · COMPONENTES

TETE · **TOP HEAD** · CABEZA

OEIL ROND FIXE
FIRM EYE
OJO FIRME

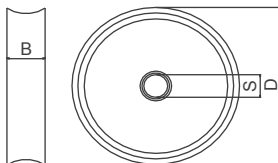


OEIL OVALE GIRATOIRE
SWIVEL EYE
CANCAMO GIRATORIO



REF	M mm	N mm	O mm	P mm	M mm	N mm	O mm	P mm
KS40	38	54	19	102	33	82	24	134
KS50	48	65	22	115	40	95	28	153
KS60	53	70	25	132	40	95	28	153

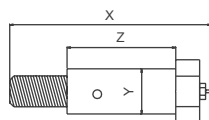
REAS · **SHEAVES** · RUEDAS



ROULEMENT A BILLES/ROULEAUX
BALL BEARING
RODAMIENTO DE BOLAS

REF	B mm	D mm	S mm	POID WEIGHT PESO Kg
4PASKS10	45	83	20	1,5
4PASKS20	45	83	20	1,5
4PASKS30	45	110	20	2,3

GOUPILLES · **PINS** · PASADORES



REF	X mm	Y mm	Z mm	POID WEIGHT PESO Kg
4PAPKS40	103	20	63	0,3
4PAPKS50	103	20	63	0,3
4PAPKS60	118	35	78	1,1

NABERAN SAREAK S.L.

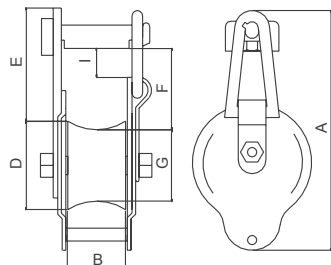
Mutrikuko Industrialdea 15
20830 Mutriku - Gipuzkoa
+34 943 195 122 | naberan@naberan.com

NABERAN FRANCE SARL

Avenue de la République
ZA Poriguenor | 29730 Le Guilvinec (France)
+33 298 582 739 | david@naberan.com

BMM - POULIE DE MANEUBRE · BMM - TACKLE BLOCKS · BMM - PASTECAS_LEVANTAR

BLEU PEINT · BLUE PAINTED · PINTADA DE AZUL



TETES · HEADS · CABEZAS



REF	SWL 5:1 Ton	A mm	B mm	D mm	E mm	F mm	G mm	I mm	POID WEIGHT PESO Kg
4PAKS110 - □ E	3	255	85	110	68	85	70	45	10
4PAKS150 - □ E	5	330	85	150	75	85	110	55	19,2
4PAKS225 - □ E	8	425	100	215	95	100	170	63	39,5

Les poulies doivent être commandées:

BMM- blocks must be ordered with:

Pastecas BMM se deben pedir con:

Indiquer dans la commande P.E KS215-1E.

On order add letter, e.g. KT215-1E.

Indicar en su pedido p.e. KT215-1E.

Ou
Either
o

Roulements à billes, graisseable.

Ball bearing, greaseable.

Rodamientos de bolas, para engrasar.

Ou
Either
o

Bague a bronze a graisser.

Bronze bushing; All bronze bushings are greaseable.

Cojinete de bronce; se pueden engrasar.

Avec un prix supplémentaire.

Against extra charge are all blocks available.

Todas las pastecas estan disponibles contra suplemento de precio.

‘C’

Testé et certifié.
Tested with certificate.
Probadas y certificadas.

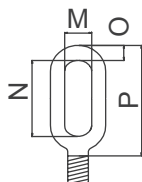
‘P’

Bague de sécurité
Split pin at locking device.
Punzon de seguridad.**NABERAN SAREAK S.L.**Mutrikuko Industrialdea 15
20830 Mutriku - Gipuzkoa
+34 943 195 122 | naberan@naberan.com**NABERAN FRANCE SARL**Avenue de la République
ZA Poriguenor | 29730 Le Guilvinec (France)
+33 298 582 739 | david@naberan.com

COMPOSANTS · **COMPONENTS** · COMPONENTES

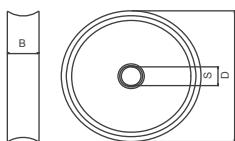
TETE · **TOP HEAD** · CABEZA

OEIL OVALE GIRATOIRE
SWIVEL EYE
CANCAMO GIRATORIO



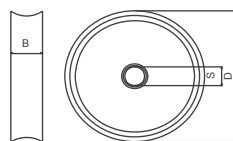
REF	M mm	N mm	O mm	P mm
KS110	33	82	24	134
KS150	40	95	28	153
KS215	54	110	35	181

REAS · **SHEAVES** · RUEDAS



ROULEMENT A BILLES/ROULEAUX
BALL BEARING
RODAMIENTO DE BOLAS

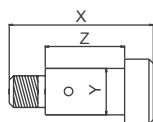
REF	B mm	D mm	R mm	S mm	POID WEIGHT PESO Kg
4PASKS110-1	85	110	62	25	3,6
4PASKS150-1	85	150	62	25	8,1
4PASKS215-1	100	215	80	35	18,3



BAGUE DE BRONZE
BRONZE BUSHING
COJINETE DE BRONCE

REF	B mm	D mm	S mm	POID WEIGHT PESO Kg
4PASKS110-0	85	110	25	3,8
4PASKS150-0	85	150	25	8,2
4PASKS215-0	100	215	35	18,5

GOUPILLES · **PINS** · PASADORES



ROULEMENT A BILLES
BALL BEARING
RODAMIENTO DE BOLAS

REF	X mm	Y mm	Z mm	POID WEIGHT PESO Kg
4PAPKS110-1	144	25	115	0,6
4PAPKS150-1	154	25	122	0,7
4PAPKS215-1	158	35	117	1,3



BAGUE DE BRONZE
BRONZE BUSHING
COJINETE DE BRONCE

REF	X mm	Y mm	Z mm	POID WEIGHT PESO Kg
4PAPKS110-0	144	25	115	0,6
4PAPKS150-0	154	25	122	0,7
4PAPKS215-0	158	35	117	1,3

NABERAN SAREAK S.L.

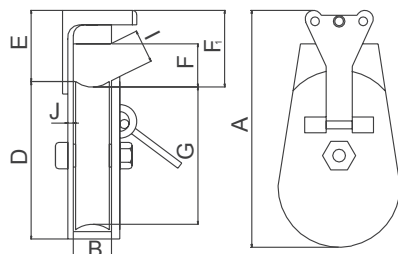
Mutrikuko Industrialdea 15
20830 Mutriku - Gipuzkoa
+34 943 195 122 | naberan@naberan.com

NABERAN FRANCE SARL

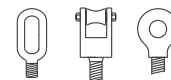
Avenue de la République
ZA Poriguenor | 29730 Le Guilvinec (France)
+33 298 582 739 | david@naberan.com

BMM - POULIE DE MANEUBRE · BMM - TACKLE BLOCKS · BMM - PASTECAS_LEVANTAR

BLEU PEINT · BLUE PAINTED · PINTADA DE AZUL



TETES · HEADS · CABEZAS



REF	SWL 5:1 Ton	A mm	B mm	D mm	E mm	F mm	F1 mm	G mm	I mm	J mm	MAX WIRE mm	POID WEIGHT PESO Kg
4PAKS230-2 □	7	380	57	230	120	70	140	195	42	8	28	31
4PAKS300-2 □	10	440	66	300	130	70	150	260	45	10	28	51
4PAKS400-2 □	15	595	70	400	180	105	210	345	70	12	28	106
4PAKS500-2 □	20	800	76	515	220	130	260	445	85	15	30	165

Les poulies doivent être commandées:

BMM- blocks must be ordered with:

Pastecas BMM se deben pedir con:

Indiquer dans la commande P.E KS230-2E.

On order add letter, e.g. KS230D-2E.

Indicar en su pedido p.e. KS230-2E.

Ou Either o	E	Oeil Ovale giratoire Swivel eye. Cancamo giratorio.
Ou Either o	F	Fourche Giratoire. Swivel fork. Horquilla giratorio.
Ou Either o	S	Oeil rond giratoire Swivel shackle eye. Ojo p/grillete giratorio.

Avec un prix supplémentaire.

Against extra charge are all blocks available.

Todas las pastecas estan disponibles contra suplemento de precio.

‘C’ Testé et certifié.
Tested with certificate.
Probadas y certificadas.

‘H’ Rea Trempé au feu.
Flame hardened sheave.
Rueda templada a fuego.

NABERAN SAREAK S.L.

Mutrikuko Industrialdea 15
20830 Mutriku - Gipuzkoa
+34 943 195 122 | naberan@naberan.com

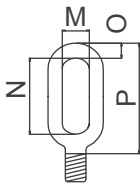
NABERAN FRANCE SARL

Avenue de la République
ZA Poriguenor | 29730 Le Guilvinec (France)
+33 298 582 739 | david@naberan.com

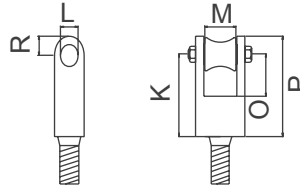
COMPOSANTS · COMPONENTS · COMPONENTES

TETE · TOP HEAD · CABEZA

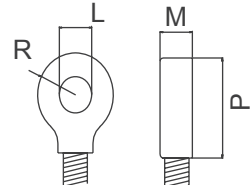
OEIL OVALE GIRATOIRE
SWIVEL EYE
CANCAMO GIRATORIO



FOURCHE GIRATOIRE
SWIVEL FORK
HORQUILLA GIRATORIA

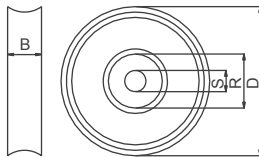


OEIL ROND GIRATOIRE
SWIVEL SHACKLE EYE
OJO P. GRILLETE GIRATORIO



REF	M mm	N mm	O mm	P mm	K mm	L mm	M mm	N mm	R mm	P mm	L mm	M mm	R mm	P mm
KS230-2	40	95	28	153	104	23	40	65	30	134	29	42	40	100
KS300-2	48	105	38	203	140	29	52	84	35	175	43	58	50	125
KS400-2	58	110	50	225	195	51	85	115	65	260	51	72	60	150
KS500-2	75	140	55	280	195	51	85	115	65	260	58	80	70	160

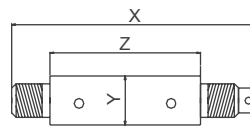
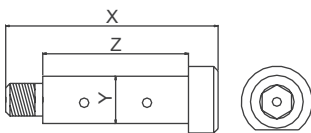
REAS · SHEAVES · RUEDAS



ROULEMENT A BILLES / ROULEAUS
BALL / ROLLER BEARING
RODAMIENTO DE BOLAS / RODILLOS

REF	B mm	D mm	R mm	S mm	POID WEIGHT PESO Kg
4PASKS230-2	57	230	80	35	12,8
4PASKS300-2	66	300	100	45	18,2
4PASKS400-2	70	400	128	60	35
4PASKS500-2	70	515	140	65	42,5

GOUPILLES · PINS · PASADORES



REF	X mm	Y mm	Z mm	POID WEIGHT PESO Kg
4PAPKS230-2	118	35	78	1,1
4PAPKS300-2	140	45	79	1,19

REF	X mm	Y mm	Z mm	POID WEIGHT PESO Kg
4PAPKS400-2	217	60	97	8
4PAPKS500-2	242	65	112	9,5

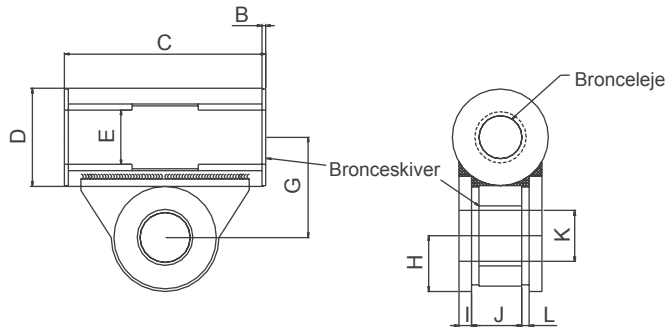
NABERAN SAREAK S.L.

Mutrikuko Industrialdea 15
20830 Mutriku - Gipuzkoa
+34 943 195 122 | naberan@naberan.com

NABERAN FRANCE SARL

Avenue de la République
ZA Poriguenor | 29730 Le Guilvinec (France)
+33 298 582 739 | david@naberan.com

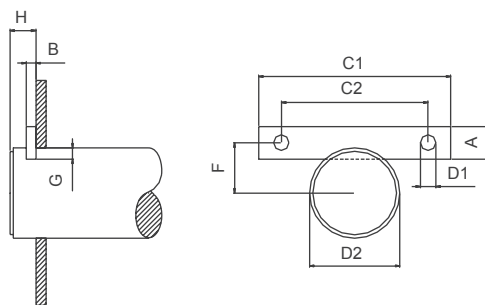
HINGE SUSPENSION



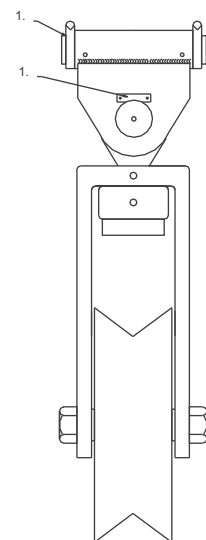
REF	SWL 5:1 Ton	A mm	B mm	C mm	D mm	E mm	G mm	H mm	I mm	J mm	K mm	L mm	POID WEIGHT PESO Kg	BOLT DIA mm
K370-2	13	215	4	223	160	78,6	170	80	30	74	78,6	0	65	78
K400-2	15	215	4	223	160	78,6	170	80	30	74	78,6	0	65	78
K500-2	20	300	4	308	160	78,6	185	80	30	80	78,6	4	80	78
K600-2	30	300	4	308	234	106	230	110	40	110	106	4	103	105
K650-2	30	300	4	308	234	106	230	110	40	110	106	4	103	105
K800-2	40	380	8	396	234	106	230	110	50	110	106	4	123	105
K1000-2	60	380	8	396	275	125	260	135	60	190	125	4	120	124

LOCKPLATE W_ BOLTS

INOX · STAINLESS



REF	A mm	B mm	C1 mm	C2 mm	D1 mm	D2 mm	F mm	G mm	H mm
K370	40	10	140	100	17	78	47	12	22
K400	40	10	140	100	17	78	47	12	22
K500	40	10	140	100	17	78	47	12	22
K600	50	12	190	140	21	105	62,5	15	25
K650	50	12	190	140	21	105	62,5	15	25
K800	50	12	190	140	21	105	62,5	15	25
K1000	50	12	190	140	21	124	70,5	16,5	25



NABERAN SAREAK S.L.

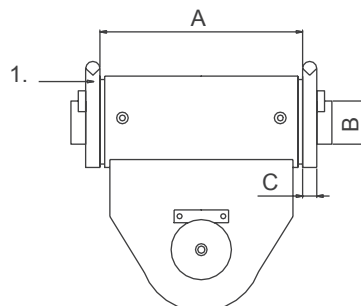
Mutrikuko Industrialdea 15
20830 Mutriku - Gipuzkoa
+34 943 195 122 | naberan@naberan.com

NABERAN FRANCE SARL

Avenue de la République
ZA Porquenor | 29730 Le Guilvinec (France)
+33 298 582 739 | david@naberan.com

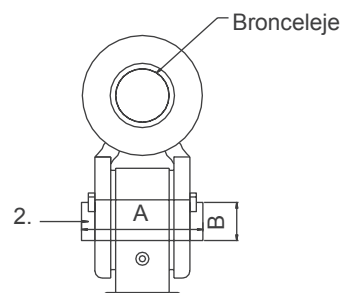
MOUNTING PLATES BETWEEN HINGE SUSPENSION & SHIPCONSTRUCTION

REF	SWL 5:1 Ton	A mm	B mm	C mm
K370-2	13	227	78,6	30
K400-2	15	227	78,6	30
K500-2	20	312	78,6	30
K600-2	30	312	106	40
K650-2	30	312	106	40
K800-2	40	400	106	50
K1000-2	60	400	125	60



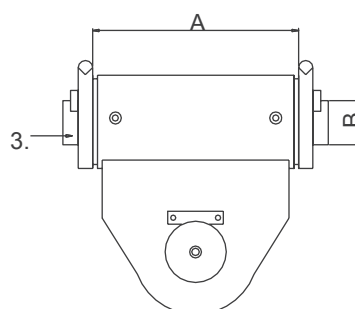
PIN FOR BLOCKEYE

REF	SWL 5:1 Ton	A mm	B mm
K370-2	13	180	78
K400-2	15	180	78
K500-2	20	192	78
K600-2	30	248	105
K650-2	30	248	105
K800-2	40	268	105
K1000-2	60	368	124



PIN FOR HINGE SUSPENSION

REF	SWL 5:1 Ton	A mm	B mm
K370-2	13	327	78
K400-2	15	327	78
K500-2	20	412	78
K600-2	30	442	105
K650-2	30	442	105
K800-2	40	550	105
K1000-2	60	570	124



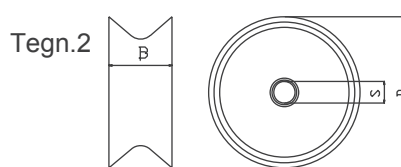
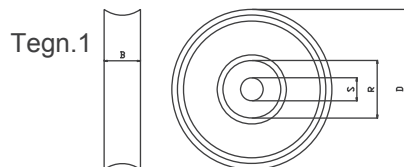
NABERAN SAREAK S.L.

Mutrikuko Industrialdea 15
20830 Mutriku - Gipuzkoa
+34 943 195 122 | naberan@naberan.com

NABERAN FRANCE SARL

Avenue de la République
ZA Poriguenor | 29730 Le Guilvinec (France)
+33 298 582 739 | david@naberan.com

BMM - REAS · BMM - SHEAVES · BMM - RUEDAS



REF	TEGN	D mm	B mm	B1 mm	G mm	R mm	S mm	POID WEIGHT PESO Kg	MAX WIRE
4PASKT1-1	1	83	22	23,1	70	47	17	0,6	16
4PASKT1-0-30	1	83	30	30,6	65	32	20	0,85	24
4PASKT1-0	1	83	22	23	70	27	20	0,75	16
4PASKT1-SS	1	80	22	23	70	47	17	0,6	16
4PASKT1N	1	83	22	22	70		17	0,15	16
4PASKT2-1	1	110	24	25,2	96	52	20	1,25	18
4PASKT2-0-30	1	110	30	30,6	91	36	25	1,5	24
4PASKT2-0-30	1	110	24	24,6	96	36	25	1,3	18
4PASKT2-SS	1	110	24	25,5	96	52	20	1,25	18
4PASKT2N	1	110	24	24	96		20	0,25	18
4PASKT3-1	1	150	28	30,5	133	47	20	2,65	20
4PASKT3-0	1	150	28	29,5	133	36	25	2,6	20
4PASKT3N	1	150	28	28	133		25	0,55	20
4PASKT4-1	1	185	35	37,3	160	62	30	5,1	22
4PASKT4-1-42	1	185	42		160	62	30	5,6	22
4PASKT4-0	1	185	35	36,7	160	41	30	5,2	22
4PASKT4N-1	1	185	35	37,4	160	62	30	1,13	22
4PASKT6-1	1	210	42	43,5	188	76	30	7,7	24
4PASKT6-0	1	210	42	41,7	188	41	30	7,6	24
4PASKT230-1	1	230	57	60	195	8	35	12,8	28
4PASKT230-2	1	230	57	60	195	80	35	12,8	28
4PASKT300-1	1	300	66	68,7	260	100	45	18,2	28
4PASKT300-2	1	300	66	68,7	260	100	45	18,2	28
4PASKT400-2	1	400	70	74,4	345	120	60	35	28
4PASKTW500-2	1	515	76	82,5	445	140	65	42,5	30
4PASKS10-0	2	83	45	45,6	58	27	20	1,5	
4PASKS20-0	2	83	45	45,6	58	27	20	1,5	
4PASKS30-0	2	110	45	45,6	82	27	20	2,3	
4PASKS40-0	2	110	45	45,6	82	27	20	2,3	
4PASKS50-0	2	150	60	60,1	114	36	60	5,7	
4PASKS60-0	2	215	60	60,1	178	41	65	11,3	
4PASE 16-0	2	83	70	70,6	54	36	25	1,6	
4PASKA50-0	2	80	52	52,6	61	27	20	1,5	
4PASKA100-0	2	80	100	100,3	57	27	20	2,3	
4PASKA150-0	2	100	150	150,5	81	36	25	7,2	
4PASKT110-1	2	110	85	86	72	62	25	3,6	
4PASKT110-0	2	110	85	86	72	36	25	3,8	
4PASKT150-1	2	150	85	86	112	62	25	8,1	
4PASKT150-0	2	150	85	86	112	36	25	8,2	
4PASKT215-1	2	215	100	102,2	170	80	35	18,3	
4PASKT215-0	2	215	100	100	170	56	35	18,5	

1. Roulement a billes · **ball bearing** · rodamiento de bolas
 2. Roulement a rouleaux · **roller bearing** · rodamiento de rodillos
 0. Bague de bronze · **bronze bushing** · cojinete de bronce
 N. Nylon rue · **nylon sheave** · rueda de nylon
 SS. Rue inox · **Stainless sheave** · rueda inoxidable

Avec un prix supplementaire.
Against extra charge are all blocks available.
 Todas las pastecas estan disponibles contra suplemento de precio.

‘H’ Rea Trempé au feu.
Flame hardened sheave.
 Rueda templada a fuego.

NABERAN SAREAK S.L.

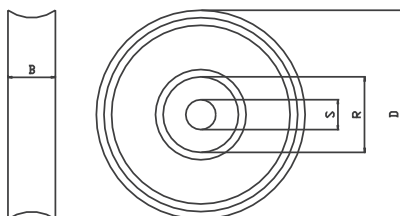
Mutrikuko Industrialdea 15
 20830 Mutriku - Gipuzkoa
 +34 943 195 122 | naberan@naberan.com

NABERAN FRANCE SARL

Avenue de la République
 ZA Poriguenor | 29730 Le Guilvinec (France)
 +33 298 582 739 | david@naberan.com

BMM - REAS · BMM - SHEAVES · BMM - RUEDAS

Tegn.3



REF	TEGN	D mm	B mm	BI mm	G mm	R mm	S mm	POID WEIGHT PESO Kg
4PASK130-1	3	130	100	100	85	62	25	5,5
4PASK130-0	3	130	100	100	85	36	25	5,7
4PASK170-1	3	170	100	100	125	62	25	11,7
4PASK170-0	3	170	100	100	125	36	25	12
4PASK215-1	3	215	100	102,2	164	80	35	18,3
4PASK215-0	3	215	100	100	164	56	35	18,5
4PASK230-1	3	230	120	121,1	170	80	35	19,5
4PASK230-0	3	230	120	120,3	170	56	38	20,1
4PASK240-1	3	240	150	152	170	80	35	24
4PASK240-0	3	240	150		170	56	38	24
4PASK300-1	3	300	120	121	240	80	35	29,8
4PASK300-0	3	300	120	120,6	240	56	38	30,7
4PASK370-1	3	370	140	143,9	285	100	45	50,5
4PASK370-0	3	370	140	145	285	100	45	50,5
4PASK400-2	3	400	180	184	300	140	60	85
4PASK500-2	3	500	180	187	380	170	70	130
4PASK600-2	3	600	180	187	450	170	70	150
4PASK650-2	3	650	240	248	500	170	70	240
4PASK800-2	3	800	240	249	600	200	85	370
4PASK1000-S	3	1000	260	275,2	825	250	123	600

1. Roulement a billes · **ball bearing** · rodamiento de bolas
 2. Roulement a rouleaux · **roller bearing** · rodamiento de rodillos
 0. Bague de bronze · **bronze bushing** · cojinete de bronce
 N. Nylon rue · **nylon sheave** · rueda de nylon
 SS. Rue inox · **Stainless sheave** · rueda inoxidable

Avec un prix supplémentaire.
Against extra charge are all blocks available.
 Todas las pastecas estan disponibles contra suplemento de precio.

‘H’ Rea Trempé au feu.
Flame hardened sheave.
 Rueda templada a fuego.

NABERAN SAREAK S.L.

Mutrikuko Industrialdea 15
 20830 Mutriku - Gipuzkoa
 +34 943 195 122 | naberan@naberan.com

NABERAN FRANCE SARL

Avenue de la République
 ZA Poriguenor | 29730 Le Guilvinec (France)
 +33 298 582 739 | david@naberan.com